

F&DHS DOCUMENT ARCHIVE

Title: Otway Mills - 1995  
Series

Source: Geelong Advertiser  
DOC: 0108







**THE SALE CONTINUES**

**BIGGEST USED CAR COST PRICE CLEARANCE SALE**

**EVERY USED CAR DISCOUNTED TO COST PRICE. YOU'LL NEVER SEE PRICES LIKE THESE AGAIN. HERE ARE EXAMPLES OF OUR HUGE DISCOUNTS.**

**1989 FORD EA FAIRMONT, 3.9 LITRE, T-BAR AUTOMATIC, AIR CONDITIONING, POWER STEERING**

A bargain buy. AM/FM radio cassette, tilt adjustable steering, splitfold rear seat and more. Be quick for this bargain. DVS-240. Was \$15,490.



**IS \$14,990**

**1988 HOLDEN VN COMMODORE EXECUTIVE, 3.8 LT. EFI V6, 4 SPEED AUTOMATIC, POWER STEERING**

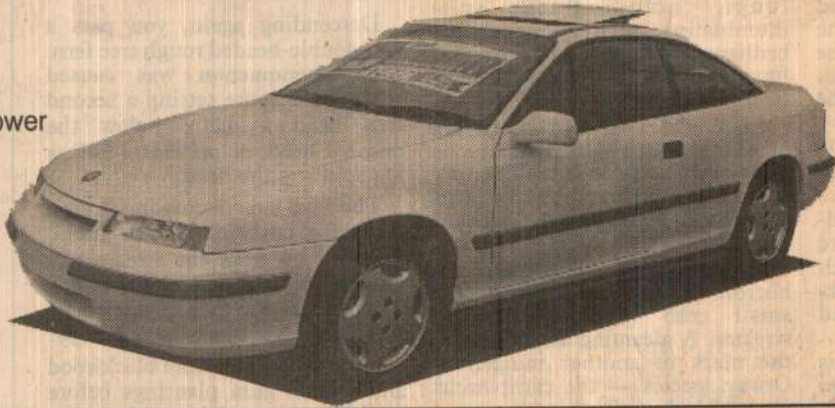
Now here's one cheap vehicle, AM/FM radio cassette, driver seat height adjuster, mudflaps, pinstripping, tow bar, high level stop lamp. Inspect today. Be early or you'll miss out. DPV-697. Was \$16,990.



**IS \$13,990**

**1992 HOLDEN CALIBRA COUPE, 2.0 LITRE DOHC EFI, 5 SPEED, FULLY OPTIONED**

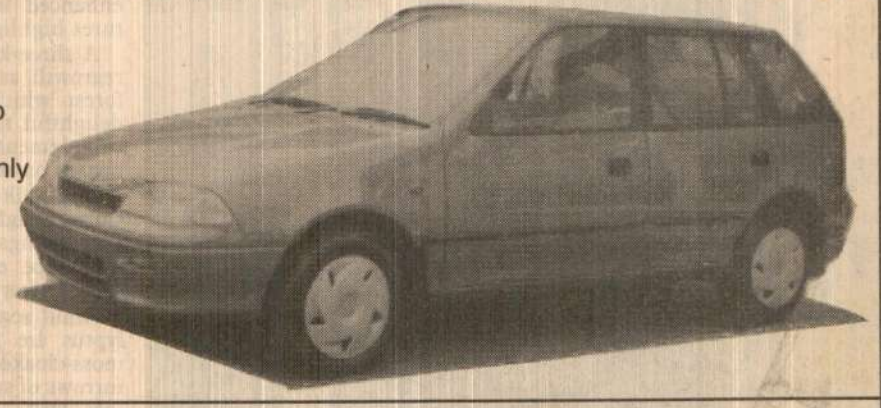
Save thousands on new car replacement, power windows, mirrors and door locks, cruise control, factory sunroof, 6 stack CD player. Only travelled 14,144 kms. EPL-626. Was \$36,990.



**IS \$32,986**

**1992 HOLDEN BARINA 5 DOOR HATCH, 1.3 LITRE, 5 SPEED MANUAL, AIR CONDITIONING**

Beep! Beep! Oh what a beauty. AM/FM radio cassette, splitfold rear seat, high level stop lamp, mudflaps and more. One owner and only 29,566 kms. EZO-740. Was \$14,990.



**IS \$14,514**

**1992 HOLDEN VP COMMODORE EXECUTIVE, 5.0 LT. EFI V8, 5 SPEED, POWER STEERING, AIR CONDITIONING**

One for the young at heart family man. Central locking, power mirrors, anti-theft security system, AM/FM radio cassette, one owner with comprehensive service history. FAY-913. Was \$25,990.



**IS \$24,990**

**1993 FORD NC LTD, 5.0 LITRE EFI V8, 4 SPEED AUTO, FULLY OPTIONED**

Leather trim, power windows, mirrors, door locks and seats, trip computer, cruise control, alloy wheels, 6 stack CD player, absolutely immaculate. Save thousands off new car replacement. FHA-288. Was \$41,990.



**IS \$39,664**

**REMEMBER YOU CAN TRUST R&B SMITH HOLDEN**

**4 CYLINDER SEDANS, WAGONS AND HATCHES**

**1992 HOLDEN BARINA HATCH**

1.3 litre, 5 speed, air conditioning, only 29,563 kms. EZO-740.

Was \$14,990 **IS \$14,514**

**1992 HOLDEN BARINA HATCH**

1.3 litre, T-bar automatic, AM/FM radio cassette. ESV-006.

Was \$15,990 **IS \$13,986**

**1993 HOLDEN APOLLO GS**

2.2 lt. EFI, 5 speed, power steering, air cond., ex. GMH Exec. FEZ-249.

Was \$23,990 **IS \$22,147**

**1993 FORD KH LASER GL**

1.6 lt., T-bar automatic, air conditioning, power steering. FDF-074.

Was \$19,990 **IS \$18,987**

**1991 MITSUBISHI TR MAGNA EXE.**

2.6 lt. ECI, 4 speed auto, air conditioning, power steering. ENN-250.

Was \$18,990 **IS \$17,484**

**1985 HOLDEN RB GEMINI SLE**

1.5 lt., T-bar automatic, air cond., power mirrors. FOZ-892.

Was \$9,990 **IS \$8,986**

**1991 HOLDEN NOVA SLX HATCH**

1.6 litre, 5 speed, air conditioning, power steering. EGG-987.

Was \$17,990 **IS \$16,744**

**1991 MITSUBISHI TR MAGNA EXE.**

2.6 litre ECI multi, 4 speed automatic, air cond., p/steering. ERT-705.

Was \$18,990 **IS \$17,876**

**1988 TOYOTA CAMRY SE WAGON**

1.8 litre EI, 5 speed, AM/FM radio. NCD-389.

Was \$12,990 **IS \$10,984**

**1985 HOLDEN JD CAMIRA SLX**

1.8 lt. EFI, 4 speed, AM/FM radio cassette, sunroof, tinted windows. FWI-207.

Was \$8,990 **IS \$5,937**

**1986 MAZDA 323 'S' HATCH**

1.6 lt. EFI, 5 speed, air conditioning, sunroof, cruise control. CUK-388.

Was \$14,990 **IS \$13,834**

**1988 FORD TELSTAR TX5 GHIA**

2.2 litre EFI, 5 speed, air cond., p/s, tinted windows. DJO-407.

Was \$18,990 **IS \$17,608**

**1993 MITSUBISHI TR MAGNA GLX**

2.6 litre, 5 speed, air cond., p/steering, power mirrors. FCT-474.

Was \$21,990 **IS \$20,337**

**1992 HOLDEN NOVA SLX HATCH**

1.6 litre EFI, 5 speed, A/C, p/steering, AM/FM radio cassette. FHW-357.

Was \$19,990 **IS \$18,983**

**1993 HOLDEN BARINA GS HATCH**

1.3 litre, 5 speed, air conditioning, only 29,273 kms. FHL-592.

Was \$16,990 **IS \$15,969**

**1992 HOLDEN NOVA SLX SEDAN**

1.6 lt. EFI, T-bar automatic, air conditioning, power steering. FBV-419.

Was \$20,990 **IS \$19,998**

**1992 DAIHATSU CHARADE CX**

1.0 litre, T-bar auto, air cond., only 23,534 kms. RAV-224.

Was \$13,953 **IS \$12,914**

**1990 HOLDEN APOLLO SLX WAGON**

2.0 litre, T-bar auto, air cond., p/steering, LPG & petrol. FRU-071.

Was \$15,990 **IS \$14,959**

**1985 FORD KB LASER GHIA**

1.5 litre, T-bar automatic, very tidy. FTI-823.

Was \$10,990 **IS \$9,260**

**1988 VOLVO 240 GL WAGON**

2.3 litre EFI, T-bar auto, air conditioning, power steering. DMR-848.

Was \$19,990 **IS \$17,951**

**1989 MAZDA 323 SHADES**

1.6 litre, 5 speed, p/steering, air conditioning, service history. DRE-890.

Was \$14,990 **IS \$13,973**

**LUXURY CARS**

**1991 HOLDEN VP CALAIS**

3.8 litre EFI V6, 4 speed auto fully optioned, 31,852 kms. EZQ-622.

Was \$29,990 **IS \$27,515**

**1990 HOLDEN VN CALAIS**

3.8 litre EFI V6, 4 speed automatic, climate controlled air conditioning, fully optioned. NCS-159.

Was \$22,990 **IS \$21,308**

**1993 FORD NC LTD**

5.0 litre EFI V8, 4 speed auto, fully optioned, leather trim. FHA-288.

Was \$41,990 **IS \$39,664**

**1986 HOLDEN VL CALAIS**

3.0 litre EFI, 4 speed automatic, air conditioning, fully optioned. CXC-990.

Was \$17,990 **IS \$16,720**

**EB/ED FALCON WAGONS**

**1993 FORD ED FALCON GLI**

4.0 litre EFI, 4 speed automatic, air conditioning, power steering, cargo barrier. FHW-794.

Was \$25,990 **IS \$24,567**

**1992 FORD EB FALCON GLI**

6 seater, 4.0 litre EFI, 4 speed automatic, air conditioning, power steering, 12 slotters. EXT-756.

Was \$26,990 **IS \$24,732**

**1993 FORD ED FALCON GLI**

4.0 litre EFI, 4 speed automatic, air conditioning, power steering, cargo barrier. FFJ-718.

Was \$25,990 **IS \$23,985**

**EA/EB/ED FALCON SEDANS**

**1993 FORD ED FALCON GLI**

4.0 litre EFI, 4 speed automatic, air conditioning, power steering, ABS braking. FIU-399.

Was \$24,990 **IS \$23,968**

**1993 FORD ED FALCON GLI**

4.0 litre EFI, 4 speed automatic, power steering, air conditioning, central locking. NCD-709.

Was \$24,990 **IS \$22,688**

**1993 FORD ED FALCON GLI**

4.0 litre EFI, 4 speed auto, air conditioning, power steering. FHW-530.

Was \$24,990 **IS \$23,076**

**1993 FORD ED FALCON GLI**

4.0 litre EFI, 4 speed automatic, air cond., power steering. NCS-738.

Was \$24,990 **IS \$23,968**

**1993 FORD ED FALCON GLI**

4.0 litre EFI, 4 speed automatic, air conditioning, power steering. NCD-710.

Was \$24,990 **IS \$22,788**

**1993 FORD ED FALCON GLI**

4.0 litre EFI, 4 speed auto, power steering, air conditioning. FHW-529.

Was \$24,990 **IS \$23,568**

**1993 FORD ED FALCON GLI**

4.0 litre EFI, 4 speed automatic, air cond., power steering, ABS braking. FJD-516.

Was \$24,990 **IS \$23,388**



F&DHS DOCUMENT ARCHIVE

Title.. *Armistead Mill Log Allocation*

Subject Category.....

Key Words.....

DOC. <sup>431</sup> ~~431~~ Date.. *1940s* ..Dig.Copy?











TOTAL

SAWMILLER'S RECORD.

Name *Armylead S.*

District *Stway West* ✓ 154

Address *Lorne.*

Loading Station *Pumyalloo.*

Name of Mill

Situation of Mill *Block 56A, Pt Carpendent*

Situation of Cutting Area *Pt. d Carpendent - Res area Pt Coradjul*

Species of Timber *Res 50 B.S.B 50.* ✓

Royalty *1/- 1/2 per 100 ft sup over the saw. } 31/3299.*  
*Small & shorts - 90*

*29/2185.*  
*30/4569*

OUTPUT 1929-30

Month.	Scantlings, &c.	Rate.	Shorts.	Rate.	Smalls.	Rate.	TOTAL.
<i>Dec.</i>	<i>17 280</i>	<i>1/2</i>					
<i>Jan</i>	<i>35 370</i>	<i>1/2</i>	<i>5800</i>	<i>9</i>			
<i>Feb</i>	<i>16 283</i>	<i>1/2</i>	<i>384</i>				
<i>Mar</i>	<i>27 128</i>	<i>1/2</i>					
<i>Apr.</i>	<i>21 095</i>	<i>1/2</i>	<i>3557</i>				
<i>May</i>	<i>28854</i>	<i>1/2</i>	<i>4882</i>				
<i>June</i>	<i>20235</i>		<i>3215</i>				
	<i>166.245</i>		<i>18.035</i>				<i>184.280.</i>
	<i>166.245</i>		<i>18.035</i>				<i>184.280</i>
			<i>1930 - 31</i>				
<i>July</i>	<i>16 092</i>	<i>1/2</i>			<i>6616</i>	<i>9</i>	
<i>Aug</i>	<i>16 347</i>				<i>1479</i>		
<i>Sept</i>	<i>16 002</i>				<i>359</i>		
<i>Oct.</i>	<i>17 299</i>				<i>4802</i>		
<i>Nov.</i>							
<i>Dec.</i>	<i>12 703</i>				<i>700</i>		
<i>Jan</i>	<i>14 753</i>				<i>3841</i>		
<i>Feb.</i>	<i>14 140</i>				<i>2107</i>		
<i>Mar.</i>	<i>21 154</i>				<i>3990</i>		
<i>April</i>	<i>14 831</i>				<i>879</i>		
<i>May</i>	<i>16963</i>				<i>2636</i>		
<i>June</i>	<i>2500</i>				<i>1040</i>		
	<i>163.034</i>				<i>28,743</i>		<i>191.477</i>

*over*

*684/8*



OUTPUT—continued.

1931-32

Month.	Scantlings, &c.	Rate.	Shorts.	Rate.	Smalls.	Rate.	TOTAL.
July	1172	9	4217	11			
Aug.	N/A						
Sept.	6		7274				
Oct.	698		11745				
Nov.	1100		7236				
Dec.			15901		2152	113	
Jan.	5780		9142		2152		
Feb.	2690		15709				
Mar.	1248		26199				
Apr.	90		16044				
May	1295		21694				
June	1380		8921				
	<u>16273</u>		<u>149082</u>				167504

SAWMILLER'S RECORD.

Name *Deer Valley Saw Co Pty Ltd*  
 Address *90 J. Marshall, Breech*  
 Name of Mill  
 Situation of Mill *Near Eel Lake corner of*  
 Situation of Cutting Area *400 acres on Chd. 1*  
 Species of Timber *40 Red*  
 Royalty *1/4 + 90*

OUTPUT.

*11 as from 1931-32*

Month.	Scantlings, &c.	Rate.	Shorts.
1930-31			
Jan.	19910	112	
Feb.	47036		
Mar.	44615		20
April	23927		
May	51759		36
June	38837		8
	<u>226,183</u>		<u>650</u>
July	676	9	528
Aug.	4430		457
Sept.	2339		478
Oct.	7215		8691
Nov.	1089		442
Dec.	1325		392
Jan.	3224		2880
Feb.	327		423
Mar.	705		623
Apr.	4037		611
May	5358		510
June	<u>31225</u>		<u>5625</u>

2/479



*Arvika, S.A.*

Month.	Seasoning Quality Log Measurement.	Rate	Scanting Quality.	Rate.	Smalls.	Rate.	TOTAL
<i>1946-47</i>							
Nov.	85,160	1/2	122,703	1/2			
Dec.	101,862	1/2	170,872	1/2			
Jan.	179,211	1/2					
Feb.	181,481	1/2					
Mar.	179,752	1/2					
Apr.	256,712	1/2					
May	75,729	1/2					
June	1,062,830	1/2					1,296,105
<i>1947-48</i>							
Aug.	65,952	1/2					
Sept.	68,527	1/2					
Oct.	96,329	1/2					
Nov.	99,752	1/2					
Dec.	96,699	1/2					
Jan.	123,393	1/2					
Feb.	71,299	1/2					
Mar.	95,001	1/2					
Apr.	97,632	1/2					
May	706,588	1/2					
June			61,959	1/2			
			131,397	1/2			
			196,336				902,911

Name **HAYDEN BROS. LTD.**

Address **BARFON DOWNS.**

Name of Mill

Situation of Mill

Situation of Cutting Area **Approved**

Species of Timber **Parish of all logs c**

Royalty **1/2d. per 100 s. ft. I.**

OUTPUT. 1944-45.

SAWMILLER'S RECORD.

Month.	Seasoning Quality Log Measurement.	Rate
Oct.	61,231	1/2
Nov.	112,830	1/2
Dec.	102,038	1/2
Jan.	80,501	1/2
Feb.	83,002	1/2
Mar.	156,773	1/2
Apr.	152,369	1/2
May	118,500	1/2
June	136,711	1/2
	1,006,691	
July	14,636	1/2
Feb.	20,566	1/2
Mar.	112,351	1/2
Apr.	105,406	1/2
May	126,580	1/2
June	35,583	1/2
	1,250,21	
Nov.	12,592	1/2
Dec.	2185	1/2
	14,777	

1589



F&DHS DOCUMENT ARCHIVE DOC.....Date.....

Title.....

0525

Subject Category.....

Key Words.....



# Colac Herald

REGISTERED BY AUSTRALIA POST PUBLICATION NO VAC 0772

COLAC, MONDAY, JANUARY 16, 1989

6 PAGES — 30c

- Canvas Blinds
- Holland Blinds
- Vertical Drapes
- Verosol Pleated Blinds

Available at:  
**McMAHONS (COLAC)**  
 Pty Ltd  
 278 Murray St, Colac  
 Phone: 31 4847

## Colac Otway timber industry passes with mill closure

by Tony Prytz

When the whirr of the bench saw at Babington's mill died late last month a piece of Otways timber history died with it.

The Babington family which has operated the mill for the past 50 years has sold its logging licence and the old mill on Mt Sabine has closed.

The seven workers employed by Babingtons have all been found work in other timber firms and brothers Ted and Erwin Babington, who have worked the mill since they were teenagers, are going to take things a bit easier.

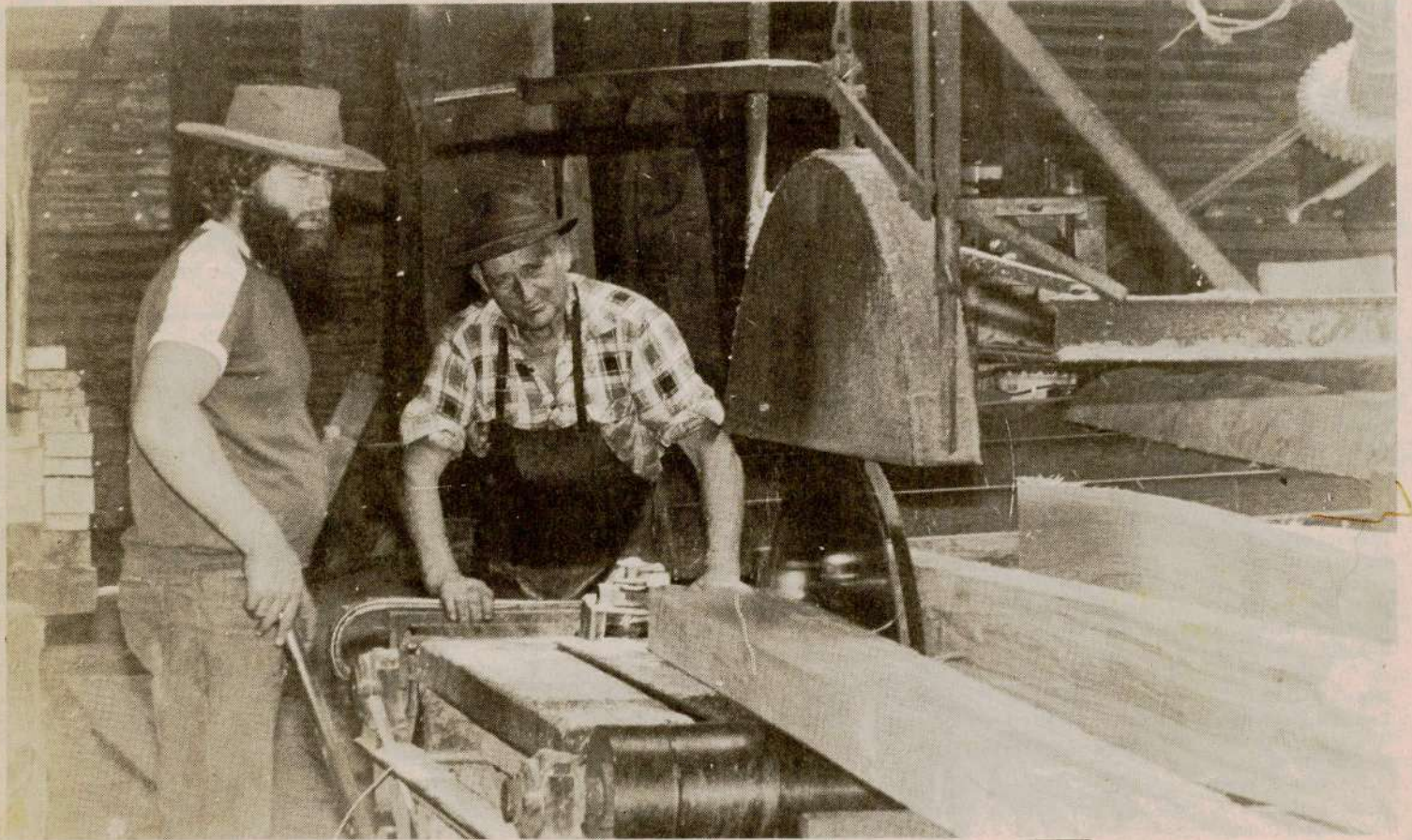
The mill was started in about 1935 by Erwin and Ted's father, Edward Babington and another man, Bill Maher.

For more than 50 years the small mill has stood among the tall timber of the eastern Otways and supplied the district with timber.

The mill has produced timber for thousands of houses over the years but has also cut timber for projects such as the archway over the Great Ocean Road at Eastern View near Aireys Inlet, huge beams used as crane supports in freeway construction and timber for the Ararat theatre.

The mill has always remained basically a small family concern and its old style character has attracted artists, photographers and school children to it.

In 1965 the Babingtons took a voluntary cut in the licence entitlement of 50 percent and later took cuts of a further 10 and five percent.



The last log from the Babington's forest allowance is put through the ripping saw by sawyer Ted Babington and tallyman Trevor Alford.

The mills' saws are driven by a 75 horsepower diesel motor that sits on almost 40 tonnes of concrete. The huge slow-revving machine drives a belt system that runs throughout the mill driving the various saws.

Erwin Babington (senior) is proud of the fact that all the employees have new jobs to go to. He is also proud of the mill's safety record. "I can only remember one accident where a bloke lost a couple of joints on a finger, but that is about all we have had in 50 years."

Ted, who has been sawyer at the mill for almost

50 years summed it up "I've got a lot of respect for those saws," he said.

"One other record we've got is that we have never had to sack a man on the job," Erwin said.

The Babingtons have had a long association with the timber industry and that will continue.

Daryl and Erwin (junior) joined the mill about eight years ago and now also contract for Bennett's at Birregurra. Erwin (senior) said the mill had always been a viable concern.

"We have never thought about getting out. "We have always been able to

sell our timber," he said.

The mill was once on private land but the land has now returned to the government and is run on a lease.

A short distance from the mill is an old building that was once the home of the Babingtons.

"I lived there when I was first married and Daryl and Erwin (junior) were born there," Erwin (senior) recalled.

"Before that it used to be run as a boarding house."

Today it is rundown and overgrown with weeds serving as a reminder of the old days.

### MILL STEEPED IN TIMBER INDUSTRY HISTORY

The mill is steeped in the history of the timber industry. Old parts of wagons and timber hauling equipment are scattered about.

The mill building itself has a low slung roof on huge log rafters. In 50 years it has changed in appearance but not in character.

Boards have been worn to a brilliant sheen by the constant rub of timber on timber over many years.

Erwin Babington said he was sad the mill was finishing. "We might still do a bit of private work, but not much," he said.

To mark the occasion Mr Babington presented the workers with an engraved pewter goblet as they collected their last pay packets.

Over the years there have been many changes in the timber industry but timber getting and sawing has always been hard work.

In the old days timber was hauled from the bush by horse teams at Mt Sabine they get about 60 inches of rain a year so logs must be stockpiled in the summer.

Today modern trucks, bulldozers and chainsaws mean more timber can be harvested but the work is still hard.

The Babingtons are also concerned at the way many good areas of timber have been locked up.

"There is some good timber very close to here but we are not allowed to get it," Daryl said.

Erwin pointed to a stand of 20 metre high trees over the road from the mill: "That land there was harvested in about 1952 — clear felled — and look at it now, beautiful," he said.

On Ash Wednesday 1983 it looked as if the mill would be in the direct path of the fire but a wind change took the fire past without damage.

For fire protection the Babingtons have built a large dug out where employees and family members would take shelter.

"The dug out used to be common throughout the bush but now with the smaller coupes they do not make them any more," Daryl said.


Like the dug out many parts of the industry are now only memories and the Babingtons would like to see some sort of museum to the industry and the people who have worked in it.

But until that happens mills such as the Babingtons and the stories that have been told over the years will have to suffice.



The mill in the old days.

## Pool strategy



**Fully Imported  
MAZDA'S**  
with a 2-year written  
warranty  
"You talk to me —  
I'll deal"  
Brian Hawkins



F&DHS DOCUMENT ARCHIVE

Title.. *Babington Mill Log Allocation*

Subject Category.....

Key Words.....

.....  
DOC. *479*..... Date. *1944*..... : Dig. Copy?



SAWMILLER'S RECORD.

Name **E. L. BABINGTON,**  
 Address **LORNE.**  
 Name of Mill  
 Situation of Mill  
 Situation of Cutting Area  
 Species of Timber  
 Royalty **1/3d. per 100 s. ft. IN THE ROUND.**

District **OTWAY EAST.**  
 File No. **41/474**  
 Date of Allotment  
 Loading Station

Royalty increased to **1/6d. per 100 s. ft. IN THE ROUND as from 28/2/44 - File 41/474.**  
**OUTPUT. 1944-45.**

Month.	Seasoning Quality Log Measurement	Rate	Scantling Quality.	Rate.	Small.	Rate.	TOTAL
July	22,117	1/6					
Aug.	44,316	1/6					
Sept.	25,993	1/6					
Nov.	37,712	1/6					
Jan.	20,262	1/6					
Feb.	89,657	1/6					
Mar.	23,398	1/6					
Apr.	33,321	1/6					
							<b>296,781</b>
<u>1945-46</u>							
Nov.	55,341	1/6					
Jan.	72,182	1/6					
Feb.	76,944	1/6					
Mar.	37,012	1/6					
Apr.	23,940	1/6					
May	82,493	1/6					
							<b>347,911</b>
<u>1946-47</u>							
Sept.	69,358	1/6					
Oct.	100,188	1/6					
Nov.	80,973	1/6					
Dec.	72,851	1/6					
Jan.	9,060	1/6					
Feb.	8,508	1/6					
Mar.	17,801	1/6					
							<b>360,712</b>

41/474



OUTPUT—continued.

*Babington, S. L.*

Month.	Seasoning Quality Log Measurement.	Rate	Scantling Quality.	Rate.	Smalls.	Rate.	TOTAL
Nov.	17,682	1/6					
Dec.	59,523	1/6					
Feb.	38,205	1/6					
Mar.	100,191	1/6					
							215,860
							19,171
							18

Name **W. H. BENNETT & SONS**

Address **BAMBRA.**

Name of Mill

Situation of Mill

Situation of Cutting Area **3,850**

Species of Timber **Bambra**

Royalty **1/3d. per 100 s. ft**

OUTPUT. **1944-45.**

SAWMILLER'S RECORD.

Month.	Seasoning Quality Log Measurement.	Rate
July	85,249	1/3
Aug.	89,078	1/3
Sept.	92,869	1/3
Oct.	79,236	1/3
Nov.	36,619	1/3
Dec.		
		383,051
Aug.	52,624	1/3
Sept.	44,683	1/3
Nov.		
Dec.		
Jan.		
Feb.		
Mar.		
May		
June	118,697	1/3
		216,004
Aug.	91,891	1/3
Sept.	92,502	1/3
Oct.	52,034	1/3
Nov.	89,893	1/3
Dec.		
Jan.		
Off.	326,320	

6479



F&DHS DOCUMENT ARCHIVE

Title Bennett Mill Log Allocation

Subject Category..... **EVENT**

Key Words.....

DOC. 475 Date 1940s



SAWMILLER'S RECORD.

Name **W. H. BENNETT & SONS,**  
 Address **BAMBERA.**  
 Name of Mill  
 Situation of Mill  
 Situation of Cutting Area **3,850 acs., Parishes of Bambera and Boonah.**  
 Species of Timber  
 Royalty **1/3d. per 100 s. ft. IN THE ROUND.**

District **OTWAY EAST.**  
 File No. **40/606.**  
 Date of Allotment **18/4/40**  
 Loading Station

Approval for cutting of **500,000 s. ft. @ 1/6d. per 100 s.ft. IN THE ROUND -**  
 (200) **2/12/43.**  
 Approval given for quantity of logs from allot. 13 & 18, Parish of Kerubi @ 2/6 per 100 s. ft. super with roomed. 45/110 - 20/1/44.

OUTPUT. **1944-45.**

Month.	Seasoning Quality Log Measurement.	Rate	Scantling Quality.	Rate.	
July	85,219	1/3			
Aug.	89,078	1/3			
Sept.	92,869	1/3			
Oct.	79,236	1/3			
Nov.	36,619	1/3	66,657	1/6	
Dec.			55,569	1/6	
	<b>383,051</b>		<b>122,236</b>		<b>505,277</b>
			<b>1945-46</b>		
Aug.	52,624	1/3			
Sep.	44,683	1/3			
Nov.			83,820	1/6	
Dec.			90,352	1/6	
Jan.			13,522	1/6	
Feb.			26,671	1/6	
Mar.			26,215	1/6	
May			149,680	1/6	
June	118,697	1/3			
	<b>216,001</b>		<b>390,290</b>		<b>606,291</b>
			<b>1946-47</b>		
Aug.	91,891	1/3			
Sept.	92,502	1/3			
Oct.	52,034	1/3			
Nov.	89,893	1/3			
Dec.			101,553	1/6	
Jan.			78,720	1/6	
Apr.	326,320		<b>180,273</b>		

Written allocation only granted to obtain logs from allot. 13, 14, 15, 16, 17, 18, Parish of Kerubi @ 2/6 per 100 s. ft. H.L.V. - 2/1/45 - 4/7/45  
 Approved issue of logging licence for 500,000 s. ft. H.L.V. from Condon's del area @ 2/6 per 100 s. ft. H.L.V. 29/1/45 - 4/7/45

TOTAL  
 Name of  
 Situation  
 Species of  
 Royalty  
 5860

RECORD EVALUATION

2/475



W. H. Bennett & Sons

Month.	Seasoning Quality Log Measurement.	Rate.	Scantling Quality.	Rate.	Small.	Rate.	TOTAL
Feb.	276,320		180,273				
Apr.			71,390	1/6			
May			111,278	1/6			
June			121,833	1/6			
	226,320		492,761	1/6			18018
July			1947	1/8			
Aug.			52,475	1/6			
Sept.			106,000	1/6			
Oct.	58,357	2/	94,576	1/6	138,662		
Nov.	80,300	2/	110,551	1/6	363,602		
May	138,662	2/	363,602		562,264		
June					169,850	2/6	
					12,123	2/6	
					163,351	2/6	
					347,247		
							819,508

SAWMILLER'S RECORD.

Name S. A. ARMISTEAD, Jr  
 Address LORNE.  
 Name of Mill  
 Situation of Mill  
 Situation of Cutting Area Allots. 10.  
 Species of Timber Parish  
 Royalty 1/- per 100 s. ft. IN

OUTPUT. 1944-45.

Month.	Seasoning Quality Log Measurement.	Rate
Sept.	73,315	10/
Oct.	131,903	1/
Nov.	22,712	1/
Dec.	110,818	1/
Jan.	99,572	1/
Feb.	112,579	1/
Mar.	101,901	1/
Apr.	106,017	1/
May	125,370	1/
June	89,222	1/
	993,611	
July	55,839	1/
Aug.		
Sep.		
Oct.		
Nov.		
Dec.		
Jan.	162,632	1/
Feb.	176,489	1/
Mar.	139,132	1/
Apr.	55,116	1/
May	12,987	1/
June	33,689	1/
	635,886	

81475



F&DHS DOCUMENT ARCHIVE DOC.....Date.....

Title.....

Subject Category..... **0549** .....

Key Words.....

.....



SAWMILL/TRAMWAY GOVERNMENT GAZETTE REFERENCES

OWNERS	SECT	REFER.	ITEM	DISTRICT	START DATE	END DATE	COMMENT
Anderson, Mackie & Co	99	65	Mill	Barwon Downs	1899	1899	29/11/99 Tfrd from Beach, McCashney & Co
Anderson, Mackie & Co	99	57	Mill	Barwon Downs	1899	1899	29/11/99 Tfrd from Beach, McCashney & Co
Anderson, Mackie & Co	99	14	Mill	Barwon Downs	1900	1902	
Anderson, Mackie & Co	99	15	Mill	Barwon Downs	1900	1902	
Anson T. & J.	47	5	Mill	Carpendeit	1882	1885	6/9/82 Abandoned
Apollo Bay Sawmills Pty Ltd	99	1164	Depot	Krambruk	1901	1901	
Apollo Bay Sawmills Pty Ltd	99		T/way	Krambruk	1903	1903	1/1/01 Tfrd from James Mackintosh Red Gum Sawmill Co
Apollo Bay Timber Co	47	1029	Mill	Krambruk	1884	1890	30/4/84 Tfrd from Seal C., 19/3/90 tfrd to Jas Mackintosh R'gum S/M C
Apollo Bay Timber Co	47	1030	Mill	Krambruk	1886	1890	19/3/90 Tfrd to The James Mackintosh Redgum Sawmill Co
Apollo Bay Timber Co	47	1031	T/way	Krambruk	1884	1890	19/3/90 Tfrd to The James Mackintosh Redgum Sawmill Co
Apollo Bay Timber Co	47	1032	Depot	Krambruk	1884	1890	19/3/90 Tfrd to The James Mackintosh Redgum Sawmill Co
Apollo Bay Timber Co	47	2261	Mill	Krambruk	1884	1885	14/5/84 Tfrd from McNeill John
Apollo Bay Timber Co	47	2262	T/way	Krambruk	1884	1885	14/5/84 Tfrd from McNeill John

6450  
0549



SAWMILL/TRAMWAY GOVERNMENT GAZETTE REFERENCES

OWNERS	SECT	REFER.	ITEM	DISTRICT	START DATE	END DATE	COMMENT
Apollo Bay Timber Co	47	2263	Depot	Krambruk	1884	1885	14/5/84 Tfrd from McNeill John
Apollo Bay Timber Co	Comp	816	Mill	Apollo Bay	1884	1898	5/3/84 Regstd
Apollo Bay Timber Co	Comp	816	Mill	Apollo Bay	1884	1898	5/3/84 Regstd
Armistead A. & Bros	99	13	Mill	Wensleydale	1899	1901	30/9/01 Abandoned
Armistead A. & Bros	99	19	Mill	Boonah	1901	1901	
Armistead A. & Bros	99	19	Mill	Boonah	1901	1902	
Armistead J. & J.J.	99	5	Mill	Boonah	1900	1901	
Armistead James	47	1028	Mill	Wensleydale	1883	1887	Cancelled - 9/9/87
Armistead James	47	16	Mill	Bambra	1879	1879	
Armistead James	47	8554	Mill	Wensleydale	1878	1881	24/8/81 Abandoned
Armistead James	93	4	Mill	Boonah	1887	1893	30/8/93 Tfrd to Armistead Jane, John & Jas.
Armistead Jane & J.J.	93	201	Mill	Boonah	1895	1899	
Armistead Jane, John & Jas.	93	4	Mill	Boonah	1893	1894	30/8/93 Tfrd from Armistead James
Balcombe George	99	0	Mill	Yaughar	1890	1891	Estate sequestrated GG 5/12/90
Barrum R. T/ber, Land & Gen Trad Co	Comp	1120	Mill	Apollo Bay	1887	1898	8/6/87 Regstd
Barrum River Timber, etc Trading Co	93	44	Mill	Krambruk	1887	1888	Tfrd from Costin Julia - 19/8/87



SAWMILL/TRAMWAY GOVERNMENT GAZETTE REFERENCES

OWNERS	SECT	REFER.	ITEM	DISTRICT	START DATE	END DATE	COMMENT
Barrum River Timber, etc Trading Co	93	45	Depot	Krambruk	1887	1888	Tfrd from Costin Julia - 19/8/87
Barrum River Timber, etc Trading Co	93	46	T/way	Krambruk	1887	1888	Tfrd from Costin Julia - 19/8/87
Bartlett John Vigar	47	1090	Mill	Barongarook	1878	1884	28/6/81 cancelled 11/7/83 Non-payment of rent 9/1/84 Land Sold
Beach F.	99	1028	Mill	Barwon Downs	1897	1899	9/1/99 Tfrd to Beach, McCashney & Co
Beach F.	99	1028	Mill	Barwon Downs	1897	1899	9/1/99 Tfrd to Beach, McCashney & Co
Beach Frederick	99	69	Mill	Kaanglang	1899	1900	31/3/00 - Abandoned
Beach McCashney & Co	99	65	Mill	Barwon Downs	1897	1899	9/1/99 Tfrd from Beach F., 29/1199 Tfrd to Anderson, Mackie & Co
Beach, McCashney & Co	99	57	Mill	Barwon Downs	1899	1899	29/11/99 Tfrd to Anderson, Mackie & Co
Benallack A.	138	85	Mill	Barongarook	1902	1903	31/3/03 Abandoned
Benallack A.	99	74	Mill	Barongarook	1900	1902	
Blue Gum Sawmill Co	47	1130	Mill	Krambruk	1886	1886	29/1/86 Abandoned
Costin Henry	93	1655	Mill	Krambruk	1885	1886	



SAWMILL/TRAMWAY GOVERNMENT GAZETTE REFERENCES

OWNERS	SECT	REFER.	ITEM	DISTRICT	START DATE	END DATE	COMMENT
Costin Henry	93	1679	T/way	Krambruk	1885	1885	
Costin Julia	93	1300	Mill	Krambruk	1887	1887	19/8/87 Tfrd to Barrum River Timber, Land & General Trading Co
Costin Julia	93	1301	T/way	Krambruk	1887	1887	19/8/87 Tfrd to Barrum River Timber, Land & General Trading Co
Costin Julia	93	1304	Depot	Krambruk	1887	1887	19/8/87 Tfrd to Barrum River Timber, Land & General Trading Co
Cowley T.W.	99	219	Mill	Barramunga	1899	1902	30/9/02 Expired
Cowley T.W.	99	229	Mill	Kaanglang	1900	1902	30/9/02 Expired
Cowley T.W.	99	1132	Mill	Barramunga	1897	1898	
Cowley T.W.	99	219	Mill	Barramunga	1899	1901	
Cowley Thos. Wm.	93	157	Mill	Lorne	1889	1894	
Deans Marsh Tramway Company Ltd	Comp	3267	T/way	Bambra	1898	1900	
Drew Charles & William	47	1504	Mill	Barongarook	1884	1884	25/6/84 Cancelled
Eggington T.	99	415	Mill	Lorne	1900	1902	3/6/02 Tfrd to Hyatt H.
Eggington T.	99	415	Mill	Lorne	1900	1901	
Elsworth John R. & others	93	279	Mill	Krambruk	1887	1888	Tfrd to Munro David - 19/10/88



SAWMILL/TRAMWAY GOVERNMENT GAZETTE REFERENCES

OWNERS	SECT	REFER.	ITEM	DISTRICT	START DATE	END DATE	COMMENT
Elsworth John R. & others	93	279	Mill	Krambruk	1887	1888	Tfrd to Munro David - 19/10/88
Fiddes & Morgan	99	453	Mill	Barongarook	1898	1901	31/3/01 Abandoned
Fiddes & Morgan	99	453	Mill	Barongarook	1898	1901	31/3/01 Abandoned
Footer & Hickingbottam	99	310	Mill	Barramunga	1890	1892	
Great Western Colliery Co NL	99	1142	T/way	Bambra	1899	1901	4/11/01 Tfrd to Great Western Colliery NL
Great Western Colliery Co NL	99	1173	T/way	Bambra	1902	1902	7/4/02 Tfrd to VR Commissioner
Hancock Arthur P.	47	1786	Mill	Gerangamete	1885	1885	
Hayden J.	99	1357	Mill	Barwon Downs	1896	1899	
Hayden J.	99	608	Mill	Barwon Downs	1900	1902	
Hayden John	99	12340	T/way	Barwon Downs	1899	1899	
Hayden Martin	99	1365	Mill	Barwon Downs	1897	1899	30/6/99 Abandoned
Hayden W.	99	1389	T/way	Barwon Downs	1900	1901	7/10/01 Tfrd to Vic Rlway Comm.
Hayden W.	99	605	Mill	Barwon Downs	1899	1902	30/9/02 Expired
Hyatt H.	145	623	Mill	Lorne	1902	1902	3/6/02 Tfrd from Eggington T., 30/6/02 Abandoned
Johnson John	Inso	2133	Mill	Colac	1879	1879	16/7/79 applies for discharge as an insolvent



SAWMILL/TRAMWAY GOVERNMENT GAZETTE REFERENCES

OWNERS	SECT	REFER.	ITEM	DISTRICT	START DATE	END DATE	COMMENT
Johnston Brothers	47	1906	Mill	Barramunga	1884	1888	Cancelled - 13/1/88
Johnston John	47	3405	Mill	Krambruk	1876	1878	
Jones & Harrison	99	803	Mill	Moorbanool	1901	1902	
Kean Robert	47	1653	Depot	Krambruk	1885	1885	
Kean Robert	47	1654	Mill	Krambruk	1885	1885	
King J.W.	99	819	Mill	Barongarook	1899	1899	31/12/99 - Abandoned
King J.W.	99	819	Mill	Barongarook	1899	1899	31/12/99 - Abandoned
King Jno. W.	99	1451	Mill	Yaughar	1898	1898	
King John W.W.	47	10056	Mill	Barongarook	1882	1883	
Kittelty Jas.	93	451	Mill	Barramunga	1886	1888	
Mackintosh James Saw Mill Co	Comp	594	Mill	Krambruk	1881	1898	13/7/81 Regstd
Mackintosh James Saw Mill Co	47	171	Depot	Krambruk	1890	1898	19/3/90 Tfrd from Apollo Bay Timber Co, 25/1/98 Non-payment of rent
Mackintosh James Saw Mill Co	47	168	Mill	Krambruk	1898	1898	
Mackintosh James Saw Mill Co	47	169	Mill	Krambruk	1890	1900	19/3/90 Tfrd from Apollo Bay Timber Co
Mackintosh James Sawmill Co	99	170	T/way	Krambruk	1890	1903	19/3/90 Tfrd from Apollo Bay Timber Co, 1/1/03 to Apollo Bay Sawmills P/L



SAWMILL/TRAMWAY GOVERNMENT GAZETTE REFERENCES

OWNERS	SECT	REFER.	ITEM	DISTRICT	START DATE	END DATE	COMMENT
Mackintosh James Sawmill Co Ltd	Comp	9114	Mill	Krambruk	1893	1893	31/8/93 Company to be volutarily wound up
Mahoney James	47	5429	Mill	Lorne	1879	1879	
McCall Joseph	99	641	Mill	Kaanglang	1891	1893	22/2/93 Expired
McGie Henry	99	649	Mill	Moreep	1893	1895	13/11/95 Non-payment of rent
McGie Robert	47	2268	Mill	Barongarook	1884	1890	
McGie Robert	93	35777	Mill	Gerangamete	1889	1890	19/2/90 Expired
McGie Robert	93	634	Mill	Lorne	1889	1890	
McNeil John	47	2261	Mill	Krambruk	1884	1884	14/5/84 Tfrd to Apollo Bay Timber Co
McNeil John	47	2262	T/way	Krambruk	1884	1884	14/5/84 Tfrd to Apollo Bay Timber Co
McNeil John	47	2263	Depot	Krambruk	1884	1884	14/5/84 Tfrd to Apollo Bay Timber Co
Milligan Samuel	47	14529	Mill	Gheringhap	1883	1883	
Mortimer Bros	47	168	Mill	Krambruk	1890	1899	19/3/90 Tfrd from Apollo Bay Timber Co, 15/3/99 Abandoned
Munro David	93	562	Mill	Krambruk	1888	1889	12/10/88 Tfrd from Elsworth John R.
Munro David	93	563	Mill	Krambruk	1888	1889	19/10/88 Tfrd from Barrum River Timber, Land & General Trading Co



SAWMILL/TRAMWAY GOVERNMENT GAZETTE REFERENCES

OWNERS	SECT	REFER.	ITEM	DISTRICT	START DATE	END DATE	COMMENT
Munro David	93	564	Depot	Krambruk	1888	1889	19/10/88 Tfrd from Barrum River Timber, Land & General Trading Co
Munro David	93	565	T/way	Krambruk	1888	1889	19/10/88 Tfrd from Barrum River Timber, Land & General Trading Co
Munro David	93	46	T/way	Krambruk	1888	1888	19/10/88 Tfrd from Barrum River Timber, Land and General Trading Co - 19/10/88
Munro David	93	44	Mill	Krambruk	1888	1888	19/10/88 Tfrd from Barrum River Timber, Land and General Trading Co - 19/10/88
Munro David	93	45	Depot	Krambruk	1888	1888	19/10/88 Tfrd from Barrum River Timber, Land and General Trading Co - 19/10/88
Munro David	93	279	Mill	Krambruk	1888	1888	12/10/88 Tfrd from Elsworth John R.
Norman & Johnson	47	1586	Mill	Irrewillipe	1876	1879	Cancelled 23/4/79
Norman & Johnson	47	958	Mill	Colac	1875	1876	
Robins E.	99	809	Mill	Barramunga	1892	1895	28/8/95 Expired
Roney Joseph	93	783	Mill	Lorne	1887	1889	10/7/89 Expired
Sanderson & Grant	99	1375	MIll	Barramunga	1901	1902	30/9/02 Expired



SAWMILL/TRAMWAY GOVERNMENT GAZETTE REFERENCES

OWNERS	SECT	REFER.	ITEM	DISTRICT	START DATE	END DATE	COMMENT
Sanderson A.	99	1359	Mill	Yaugher	1899	1901	31/12/01 Abandoned
Sanderson A.	99	1359	Mill	Yaugher	1899	1901	
Sanderson A.	99	1369	Mill	Barramunga	1901	1902	
Sanderson Alex	99	1839	Mill	Yaugher	1897	1898	
Sanderson Alex	99	1787	T/way	Yaugher	1901	1901	
Sanderson Alexander	99	1845	T/way	Yaugher	1897	1897	1/11/97 Tfrd to VR Commrs
Sanderson Alexander	99	1854	T/way	Yaugher	1901	1901	
Seal Charles	47	2768	Mill	Krambruk	1884	1884	30/4/84 Tfrd to Apollo Bay Timber Co
Seebeck & Caspar	99	1356	Mill	Bullengarook	1899	1904	31/12/04 Abandoned
Seebeck & Caspar	99	1356	Mill	Bullengarook	1899	1904	31/12/04 Abandoned
Sexton James & Sons	47	10085	Mill	Barongarook	1882	1883	16/5/83 Cancelled
Sharrow Thomas	47	2730	Mill	Yaugher	1881	1885	27/5/85 Non-payment of rent
Silk E.T.	47	5542	Mill	Irrewillipe	1876	1880	Tfrd to Silk Edith & Sherrin Wm, executors 1/1/80 Tfrd to Silk Jno
Silk Edith & Sherrin Wm	47	6365	Mill	Irrewillipe	1879	1880	1/1/79 Executors of E.T. Silk's estate
Silk J.	99	1358	Mill	Coradjil	1899	1901	31/12/01 Abandoned



SAWMILL/TRAMWAY GOVERNMENT GAZETTE REFERENCES

OWNERS	SECT	REFER.	ITEM	DISTRICT	START DATE	END DATE	COMMENT
Silk J.	99	883	Mill	Coradjil	1893	1898	
Silk J.	99	1358	Mill	Coradjil	1899	1901	
Silk Jno	47	8652	Mill	Irrewillipe	1880	1882	1/1/80 Tfrd from Silk E.T. 28/6/82 Cancelled
Silk John	47	2776	Mill	Irrewillipe	1884	1889	26/6/89 Abandoned
Silk John & Edward	93	853	Mill	Coradjil	1889	1892	
Silk John & Edward	93	845	T/way	Coradjil	1889	1893	
Smith H.B	93	856	Jetty	Moolap	1890	1890	
Smith H.B	93	835	T/way	Bellarine	1885	1895	
Smith Wm.	47	3358	Mill	East of Bamb	1876	1879	x
Southern & Co	47		Mill	Moorarbool	1875	1875	
Stirling William	47	5538	Mill	Boonah	1880	1881	2/11/81 Cancelled
Taylor, Owens & Son	99	919	Mill	Yaugher	1892	1894	12/9/94 Abandoned
Telford Peter	93	1672	T/way	Krambruk	1885	1885	
Telford Peter	93	1673	Depot	Krambruk	1885	1885	
Telford Peter	47	2844	Depot	Krambruk	1885	1885	
Telford Peter	47	2845	T/way	Krambruk	1885	1885	
Telford Peter	93	913	Mill	Krambruk	1889	1889	



SAWMILL/TRAMWAY GOVERNMENT GAZETTE REFERENCES

OWNERS	SECT	REFER.	ITEM	DISTRICT	START DATE	END DATE	COMMENT
Telford Peter	93	910	Mill	Krambruk	1888	1891	
Thomas John	47	3404	Mill	Bambra	1876	1878	
Thompson J. & Grove W.	47	2842	Mill	Lorne	1883	1883	17/10/83 Cancelled
Vickery S.S.	93	562	Mill	Krambruk	1889	1890	27/3/89 Tfrd from Munro David
Vickery S.S.	93	563	Mill	Krambruk	1889	1890	27/3/89 Tfrd from Munro David
Vickery S.S.	93	564	Depot	Krambruk	1889	1890	27/3/89 Tfrd from Munro David
Vickery S.S.	93	932	T/way	Krambruk	1889	1894	27/3/89 Tfrd from Munro David
Victorian Railways Commissioners	99	1845	T/way	Yaughar	1897	1897	1/11/97 Tfrd from Sanderson A.
Victorian Railways Commissioners	99	1787	T/way	Yaughar	1898	1898	
Victorian Railways Commissioners	99	1389	T/way	Barwon Downs	1901	1901	7/10/01 Tfrd from Hayden W.
Victorian Railways Commissioners	99	1173	T/way	Bambra	1902	1902	7/4/02 Tfrd from Great Western Colliery NL
Whitelaw J., Henry R. & McGregor J.	Part	2469	Mill	Yaughar	1903	1903	28/12/03 Partnership dissolved
Wickham C. & McPolwarth A.	47	2952	Mill	Lorne	1883	1883	17/10/83 Cancelled
Witnish R.	87	1626	Mill	Otway State	1899	1900	31/3/00 Abandoned
Witnish R.	87	1624	Mill	Otway State	1899	1899	



Page No. 12  
22/10/91

SAWMILL/TRAMWAY GOVERNMENT GAZETTE REFERENCES

OWNERS	SECT	REFER.	ITEM	DISTRICT	START	END	COMMENT
					DATE	DATE	
Woods Thomas	Inso	3759	Mill	Colac	1884	1884	12/7/84 Applies for discharge



OTWAY REFERENCES FROM WORKING FILE (ie Refs not finalised)

Anderson, Mackie & Co	145	1008 T/way	Barwon Downs	Colac		1905	1905	
Anderson, Mackie & Co	138	21 Mill	Barwon Downs	Colac	y	1902	1905	
Anderson, Mackie & Co	145	1112 T/way	Barwon Downs	Colac		1905	1905	
Anderson, Mackie & Co	138	22 Mill	Barwon Downs	Colac	y	1902	1905	
Apollo Bay Sawmills Pty Ltd	99	16 Mill	Krambruk	Geelong	y	1899	1905	
Armistead A. Bros	145	24 Mill	Lorne	Geelong	y	1904	1905	
Armistead A. & Bros	145	1114 T/way	Boonah	Geelong		1904	1905	
Armistead A. & Bros	138	23 Mill	Boonah	Geelong	y	1902	1904	
Beech Forest Saw Milling CComp		3630 Mill	Beech Forest	Beech Forest	y	1902	1906	22/11/02 Registered 18/1/06
Beech Forest Sawmilling C	138	84 Mill	Baramunga	Colac		1903	1904	
Beech Forest Sawmilling C	145	87 Mill	Moorbanool	Colac	y	1903	1904	
Benallack A.	138	95 Mill	Barongarook	Colac	y	1905	1905	
Bird John Jabez	Insolv	4165 Mill	Forrest	Colac	y	1904	1904	24/5/04 Applies for discharge
Brown & Jones	145	1438 T/way	Yaughar	Colac	y	1902	1904	29/1/04 Expired
Cowley, Whitelaw & Henry	138	242 Mill	Kaanglang	Colac	y	1902	1904	
Cowley, Whitelaw & Henry	138	243 Mill	Barramunga	Colac	y	1902	1904	
Hayden Bros	138	18662 Logs	Otway State Forest	Colac	y	1904	1904	
Hayden John	99	1367 Mill	Barwon Downs	Geelong		1901	1905	
Hayden J.	138	629 Mill	Barwon Downs	Colac	y	1902	1905	
Hayden M.	138	608 Mill	Barwon Downs	Colac		1904	1904	30/9/02 Expired
Hayden W.	138	628 Mill	Barwon Downs	Colac	y	1902	1905	
Henry & McGregor	138	18661 Logs	Otway State Forest	Colac	y	1904	1904	
Henry & McGregor	138	638 Mill	Barramunga	Colac		1905	1905	
Henry & McGregor	138	637 Mill	Kaanglang	Colac		1905	1905	
Mackie A.	138	16603 Logs	Otway State Forest	Colac	y	1904	1904	
Montgomeroy & Bradshaw	138	20828 Logs	Heytesbury	Colac	y	1905	1905	
Morgan H.	138	20827 Logs	Timboon	Colac	y	1905	1905	
Robins E.	145	1289 Mill	Barramunga	Colac	y	1904	1905	
Sanderson A.	138	1379 Mill	Barramunga	Colac	y	1902	1905	
Sanderson & Grant	145	1873 T/way	Barramunga	Colac		1904	1904	9/5/04 Tfrd to Victorian Railways
Sanderson & Grant	138	1380 Mill	Barramunga	Colac	y	1902	1905	
Victorian Railways Commis	145	1873 T/way	Barramunga	Colac		1904	1904	9/5/04 Tfrd from Sanderson & G
Victorian Railways Commis	145	1934 T/way	Barramunga	Geelong		1905	1905	
Victorian Railways Commis	145	1337 T/way	Lorne	Colac		1905	1905	
Victorian Railways Commis	145	1939 T/way	Barwon Downs	Geelong	y	1904	1904	
Victorian Railways Commis	145	1984 T/way	Barramunga	Geelong	y	1904	1904	



OTWAY REFERENCES FROM WORKING FILE (ie Refs not finalised)

Victorian Railways Commis	99	1791 T/way	Barramunga & Yaug	Geelong		1899	1905
Victorian Railways Commis	145	1935 T/way	Barwon Downs	Geelong		1905	1905
Wark H. & T.	145	2988 Mill	Paaratte	Geelong	y	1905	1905
Wark H. & T.	138	21504 Logs	Paaratte	Colac	y	1905	1905



F&DHS DOCUMENT ARCHIVE

Title SANDUST & STEAM BOOK

LAUNCE - NORMAN HOUGHTON

Source COLLEGE Date 2-2-11

Key Words BUSH MILLS, TIMBER, HOUGHTON

0359



**KARAOKE TONIGHT**  
 9.30pm start  
**FOSSIL ROCK March 5**  
**OPEN FRIDAY 5PM**  
**CLOSED SATURDAY**  
 Call Rod on 0407 319 676  
 The PTB is the Home of Karaoke

**BULMERS CIDER ON TAP**



27 Murray Street, Colac

**THIS SATURDAY NIGHT**



**SATURDAY MARCH 19**

**LIVE BAND**



**STRAIGHT**



**SHOOTERS**  
 Murray Street, Colac (next to La Porchetta)

**COLAC CINEMAS**  
 www.colaccinemas.com.au PHONE 5232 2077

**I AM NUMBER FOUR (M)**  
 Fri, Sat, Sun, Mon, Tue, Wed  
 11.00am, 3.00pm, 6.45pm, 8.45pm

**127 HOURS (M)** **LAST WEEK \$9**  
 Fri, Sat, Sun, Mon, Tue, Wed 5.00pm

**BLACK SWAN (MA)**  
 Fri, Sat, Sun, Mon, Tue, Wed 1.00pm

**COMMENCING MARCH 3**

How Do You Know

**THE FIGHTER**

**TRUE GRIT**

**COMMENCING MARCH 10**

**RANGO**

**THE COLAC PLAYERS**


**Robin Hood The Musical**

**FEBRUARY 2011 at COPACC**  
 Directed by David McKenzie  
 Book by Tim Kelly.  
 Music by Arne Christjansen. Lyrics by Ole Kittleson.

**Thursday Feb 24**  
 & **Friday Feb 25**  
 at 7:00PM

**Saturday Feb 26**  
 & **Sunday Feb 27**  
 at 2:00PM

Adults \$22  
 Concession \$15  
 Family \$50  
 at the COPACC Box Office  
 Phone 5232 2077



**YOUR WEEKEND**

# Walkers raise for medical r

by Lucinda Ormonde

**Colac and district people will run, walk and dance to raise money for cancer research this weekend.**

Colac's Central Reserve will host Relay for Life, a national event in which teams relay around the oval throughout the night.

Tomorrow's event will be the sixth year that Kick Back Country Line Dancers have been involved.

Captain Majella Brown said the team had "probably raised about \$30,000" in the years they'd been involved.

"We raise money for an extremely good cause," she said.

"I've lost several family members through cancer, so it's a good benefit to relay and raise money for."

Ms Brown, a line dancing teacher, said 25 Kick Back

**"A couple of our members have been fairly closely connected with people with cancer."**



**LYNNE MURDOCH**

Country Line Dancers would participate in two teams.

"My group gets involved and they're a great bunch of friends and they all support me," she said.

Ms Brown said the group would give a line dancing demonstration at 4:30pm.

Lynne Murdoch said her

team, the Bi had been par

event since it

"We've done in Colac," she

"A couple

members have been connected w

cancer."

Ms Murdoch



**HISTORIAN:** Former Colac man Norman Houghton has revised his 1975 offering Sawdust and Steam, which Polwarth MP Terry Mulder will launch.

# Otways logging features in book

**Researching former Otways saw mills left a former Colac man unable to open his right eye.**

Two leaches wriggled under historian Norman Houghton's eye lid as he trekked through the Otways mapping former timber railways.

"Once they had stopped sucking I was able to flick them out," Mr Houghton said.

"I was able to drive home, but it was all closed up for three days," he said.

"It was rough work, but it was a job that had to be done."

Mr Houghton's mapping work forms the basis of a second edition of his book, *Sawdust and Steam*.

The revamped book chronicles timber harvesting in the eastern section of the Otways between 1850 and 2010.

Mr Houghton said an increase in resources and information prompted him to revise his book.

It took him five years to revamp

his 1975 offering and Polwarth MP Terry Mulder will launch the second edition at Forrest tomorrow.

The launch is at 2pm at the Forrest hall.

*The Colac Herald* has two signed copies of *Sawdust and Steam* to give away.

To enter, answer the following question: in what year did Mr Houghton publish the book's first edition?

Send your answer to the *Sawdust and Steam* Giveaway, *The Colac Herald*, PO Box 21, Colac, 3250, or drop the entry into *The Colac Herald's* Bromfield Street office.

Entries close on February 23 at 5pm.

Meanwhile, Colac's Anne Johnson and Keith Buchanan were the winners of *The Colac Herald's* A Grand Parade giveaway.

The winners will each receive a copy of Mr Houghton's *A Grand Parade*, which chronicles 150 years of the Colac and District Pastoral and Agricultural Society.



## ATTENDANCE SIGNATURES -

2/2/11.

Book Launch - SAWDUST  
& STEAMRegistrar

Jean Whitehead

Kileen Larson.

Ron Cunningham

Margaret MacLennan

Shelley Jones

Albert H. Halden

Michael Fox.

Lois KEMP

Maureen Ward

John Weickhardt

John James

Trevor Prescott

Val Blittoni.

Marg Boston

Sandra Bobbedick

Mary Menzel (Newcombe)

Ed Cole

Evelyn Robb.

Rosemary Murrane

Eve Ann Thomas

Valley Armstrong

Geoff SPEIRS

Beth Neyland

Vytautas Maciulis

Frank + Karen Jones

Nad Barry.

Leila Day.

Georgina Day

Scott Gould

Nell Eddy.

Alan Eddy

Ted Stueben.

Keith Chambers

Liz Chambers

Mark Minchinton

Cliff Jans

Rob Jans

Bin Deale

Sheila Jackson

BOB. JACOBSON

ARTHUR ARMISTEAD.

Tony MAGREE

JOHN &amp; PAULA HAYDEN

ROGER HILL

Vic Mackay

Phil Dickard.

Bill HANKS

Ranami Evans

Sam Turner

Ken Duff

Harold. Reed

Ken Widdowson



Speech Notes

Ladies and gentlemen,

I would like to welcome all of you here today for this special occasion.

My name is Ken Widdowson and I am the President of the Forrest Historical Society.

Today is a celebration of an industry, the timber industry, that means so much to Forrest.

We have here today representatives of families that have long associations with the industry.

We have members of the Armistead family, now into its sixth generation in the industry, having commenced at Stieglitz in 1863. That makes a presence of 148 years.

We also have representatives of the Hayden family, whose continuous association with timber goes back to 1879 at Trentham and Blackwood, and now managing the gigantic AKD operation at Colac

On a more current note we also have Peter Adams here today whose mill at Birregurra, currently operating in the value adding process, and which is a lineal descendent of one of Forrest's first sawmill businesses from 1897.

[If Peter Adams does not turn up say the following.....

On a more current note we also have staff from Peter Adam's mill at Birregurra and which is a lineal descendent of one of Forrest's first sawmill businesses from 1897.

So we have the first and last here today.

There are several other people here whose families and themselves have been working in the industry for decades and are familiar with the bush around Forrest. Plus former staff of the forest managers such as the old Forests Commission and the Department of Sustainability and Environment.



I note the presence of those from the various historical societies in the Shire, whose efforts have preserved many photographic images and records of the timber industry.

Also present are those from the general community who have, or who did have, some connection with the industry and those with an interest in railways and timber tramways.

Today is about a book. A history of the sawmilling industry in the East Otways from go to whoa by Norman Houghton. We will hear a bit more about the author a little later but good books require good designers and printers. The book's author is fortunate to have used a designer and printer who has a special affinity for railways and tramways and therefore has given the production a special touch. That man is Frank Jones and he is here today.

(Introduction to first speaker - Alan Eddy).....

The timber industry is multi-faceted and its overall understanding requires a certain degree of sophistication. One man who fits the bill in this regard is Alan Eddy. Alan had a lifetime career in forestry both as a district forester, Principal of the School of Forestry at Creswick, Policy Coordinator for the, Forests Commission, Forestry adviser to Board of Inquiry into the Timber Industry, Executive officer to Director, Lands and Forests Division, Department of Conservation, Forests and Lands and research officer for the Victorian Timber Industry Training Board.

As well as that Alan is a book reviews editor and indexer, so not only has he has a special understanding of forestry but he also knows something about history books.

I now ask Alan to say a few words about the book.....

(When Alan concludes, make introduction to Terry Mulder)



I would like to introduce the Honourable Terry Mulder, MLA for Polwarth, and recently elevated to Minister for Transport and Roads. Terry is a district boy who is very familiar with Forrest and surrounds and understands the economics that underpins timber communities. Welcome Terry. I now ask you formally to launch the book.

Wind up remarks.

Thank you Terry for that wonderful launch.

No doubt you are all anxious to get your hands on a copy of the book. It is available at Norman's sales stall at the special launching day price of \$40, which is a discount on the normal retail price of \$44.95.

There are also other sales stalls with a selection of various historical books.

The Forrest Historical Society welcomes new members who wish to support our work, such as the book launched here today. So we will welcome you if you choose to sign up as a member today. It only costs \$???

For those of you not recently familiar with Forrest, there is a heritage trail around town and the Tiger rail trail from town towards Yaugher. You might like to do those walks.

There is afternoon tea and coffee available, so please partake of that.

That concludes the formal part of the proceedings.

Please enjoy the rest of the afternoon in Forrest.



F&DHS DOCUMENT ARCHIVE

Title *Grant's Mill Log Allocation*

Subject Category.....

Key Words.....

DOC. *477*

Date *1920's*







**HAYDEN BROTHERS**

TELEGRAPHIC ADDRESS  
BARWON DOWNS

*Barwon Downs Saw Mills, Timber Yards & General Store*

(Connected by Steam Tramway with Barwon Railway Station)

TELEPHONE NO. 1 (3 Lines)

- 1 STORE
- 1 MILL
- 1 TIMBER YARD

807  
821  
850  
1600  
1880  
1815

*Barwon Downs,*

*No. 1  
Furniture  
in service  
Hayden Brothers  
17/2/67*

demonstration in what is practically a revolution in sawmill transport was given on the property of Messrs. Sanderson and Grant, sawmillers, on Wednesday last. A large number of sawmillers and sawmill representatives from the Otway and Beech Forrest were present. Those in attendance to witness the test were— Mr. J. Knox (manager), Mr. Brian (engineer of Weeaprounah mill, of Pettitts' Geelong), Mr. J. Grant (Sanderson and Grant, Barramunga), Mr. J. Hayden... (of Hayden Bros', Barwon mill), Mr. E. Henry... (of Henry and Son, Otway sawmills), Mr. J. Condon (Ferguson mill), Messrs. T. Maguire, Cr. J. E. Heunigan, Cr. Fry, W. T. Gale, "The Colac Herald" representative; Mr. J. Sullivan, Mr. C. Turner, Mr. Rylan (Ford cars), Mr. G. F. Sewell (of Sewell Pty. Ltd), Mr. Frank Trail, and engineer demonstrators.

pull without incident, with the exception of the continuous drizzle of rain which continued throughout during the return trip. The party had a light luncheon at Mr. Telford's Barramunga Hotel. All interested unanimously expressed their satisfaction at the result of the test. That this new form of transport marks a new era in the sawmilling industry is undoubted. That it is possible to convey nearly a 12 tons load over eight miles of rugged mountain country with a climb of one in sixteen, at the cost of a little over one tin of power kerosene seems incredible. This, however, was what, under bad conditions, the tractor accomplished.

The Trail Fordson, which weighs about four tons, consists of a 24 h.p. motor on four wheels of 8in. tread, and 2½ inch flanges. It has three forward and one reverse gear. The outstanding feature of the machine is an attachment of a connecting shaft from the



F&DHS DOCUMENT ARCHIVE

Title Grant's Tramway Tractor

**VIDEOS** Subject Category.....

Key Words.....

DOC. 462

Date 1928



TOTAL  
Name of Mill  
Situation of Mill  
Species of Timber  
Royalty  
OUTPUT

RECORD  
JAWAS

SAWMILLER'S  
RECORD.

Name J. H. Grants Ply Lia District Blway East **142**  
 Address Forest  
 Name of Mill \_\_\_\_\_ Loading Station Forest 3/2332  
 Situation of Mill Blw 71, Pl of Banamunga  
 Situation of Cutting Area 75A, 43B, 43A, + 73C, 71, 71B (In watershed of Blangolal Cl)  
 Species of Timber \_\_\_\_\_  
 Royalty 1/2 @ 9%

OUTPUT 1931-32

Month.	Scantlings, &c.	Rate.	Shorts.	Rate.	Small.	Rate.	TOTAL.
July	13,310	11-					
Aug	15,302						63,739
Sept	46,533						107,161
Oct	37,480						
Nov.	23,614						79,823
Dec.	36,654						87,326
Jan.	30,337						4,429
Feb.	33,144						5,291
Mar.	34,551		39324	9			8,367
Apr.	32,444		9600				198
May	36,913		8016				17,742
June	36,206		13826				70,208
	<u>392,488</u>		<u>13826</u>				72,407
			<u>35,376</u>				<u>418,164</u>

21472



F&DHS DOCUMENT ARCHIVE  
Title HAYDEN BROS. MILL WORKER  
INJURED BY DOG HOOKS  
Source ARGUS  
DOC. 0.187



**STRUCK BY DOG-HOOKS**

**COLAC, Friday.**—Thomas Maher, a young man, employed at Hayden Bros. saw-mills, Barwon Downs, sustained painful injuries on Thursday. The dog hooks used for hauling in the heavy logs flew apart, and struck Maher with great force on the shoulder and head. He was driven in to the Colac Hospital, and attended to by Dr. Seaton. He had sustained a compound fracture of the upper arm, a severe punctured wound, and laceration of the face.

*From research by Matt McGrath  
Barwon Downs H.S.*



F&DHS DOCUMENT ARCHIVE

Title.....

Source.....

DOC.0207.....





Hayden Bros.' Mill — burnt out in 1939 fires.

At this time the tramways were abandoned in favour of road motor trucks. A short section was retained between the Hayden mill and the railway yards. A horse was used to haul the sawn timber to the unloading crane.

The kilns burned down in 1944 (the remains can still be seen) but the mill continued to operate until about 1972.



F&DHS DOCUMENT ARCHIVE DOC0293 Date.....

Title..... HAYDEN BROS.....

Subject Category... SAN MILV

Key Words..... ACCOUNT.....



Sawmills—OTWAY FOREST  
Drying Kilns and Planing Mill—BARWON DOWNS

Telephone: BARWON DOWNS 1

REGISTERED

KILN **OTWAY** DRIED

TRADE MARK

**HAYDEN BROS. PTY. LTD.**  
SAWMILLERS & TIMBER MERCHANTS

*Barwon Downs*, 22nd. Dec. 19 38  
VICTORIA

Mr. L. Kosloff,  
WARRACKNABEAL

Dear Sir,

We have your cheque for £50/-/- on  
account for which we thank you, and enclose herewith  
our receipt.

Yours faithfully,

HAYDEN BROS. Pty. Ltd.,

*J. M. Hayden*  
Secretary.



F&DHS DOCUMENT ARCHIVE  
Title: *HAYDEN - Timber Account 1938*  
Subject Category: *SAWMILLS*  
Key Words: *ACCOUNT*  
DOC..... Date: *1938*... Did Copy?



REGISTERED

KILN **OTWAY** DRIED

TRADE MARK

**HAYDEN BROS. PTY. LTD.**  
SAWMILLERS & TIMBER MERCHANTS

Barwon Downs, 22nd. Dec. 19 38  
VICTORIA

Mr. L. Kosloff,  
WARRACKBEEAL



BARWON DOWNS,

VICTORIA

761

22 Dec. 1938

£ 0/-/- on

Received from

L. Kosloff

you, and enclose herewith

the sum of

fifty

Pounds

Shillings and

Pence

£ 50 : : :

on a/c

With thanks,

HAYDEN BROS. PTY. LTD.

Per

M. Hayden

Ltd.,

M. Hayden  
Secretary.



From. B. W.  
 110 St. Michael Centre  
 Feb. 2010

SAWMILLS: OTWAY FOREST  
**HAYDEN BROS. PTY. LTD.**  
 Sawmillers & Timber Merchants  
 BARWON DOWNS, VICTORIA

DRYING KILNS & PLANING MILL  
 BARWON DOWNS

STATEMENT FOR MONTH ENDING  
 April 30th. 1939

Mr. E.D. Kosloff,  
 Warracknabeal.

TELEPHONE: BARWON DOWNS 1

DETAILS OF PREVIOUS ACCOUNT RENDERED				BALANCE DUE
DATE	INV. NO.	PARTICULARS	DEBIT	CREDIT
Apr. 6	2270	Hardwood	65 19 -	£65 19 -



BARWON DOWNS,  
 VICTORIA

21<sup>st</sup> June 1939

Received from E. D. Kosloff

the sum of *sixty five* Pounds  
*nineteen* Shillings and

£ 65 : 19 : -

With thanks,  
 HAYDEN BROS. PTY. LTD.  
 Per *A. Hayden*



F&DHS DOCUMENT ARCHIVE

Title. INQUEST...INTO...HAYDENS

MILL FATAL BRIDGE CRASH

Source. ARGUS.....

DOC. 01.89.....



### **COLLAPSE OF BRIDGE; CORONER'S FINDING**

**COLAC, Tues:** At an inquest held at Forrest into the death of Claude Charles Marendaz, 32, married, who was killed when a tractor and two trucks crashed through a bridge into a deep gully, Mr C. Neale, JP, acting coroner, found that Marendaz had died from injuries received by being crushed beneath a truck which fell from a bridge into a gully, and that the collapse of the bridge was due to a defective stringer in one of the spans of the bridge.

Joseph Francis Hayden, sawmill owner, of Barwon Downs, said he was on one of the trucks. He had personally inspected the bridges over which they were to travel that day, and he felt it quite safe to proceed.

First-constable G. J. Davies said that after the accident he inspected the bridge. He considered it was not in a safe condition to carry the load. The tractor weighed seven or eight tons.



F&DHS DOCUMENT ARCHIVE

Title SENSATIONAL ESCAPE FROM  
LOC & TIMBER TRUCKS

Source ARGUS

DOC 0188



## MEN JUMP FROM ENGINE.

### SENSATIONAL ESCAPE.

**BARWON DOWNS, Monday.**—When an engine and trucks, laden with timber, were returning from Messrs. Hayden Bros. mill on Friday the driver, Mr. W. Hartley, and Mr. A. Hall, of Barwon Downs, had a sensational experience.

While on the down grade, and rounding a sharp curve, a tree was seen across the line. The driver had no chance of stopping before reaching the tree, as the rails were wet, but he immediately applied the brakes, and called to Mr. Hall to jump. Both jumped, and the driver landed safely, but Mr. Hall's knee was injured by the fall, and he was unable to move out of the way.

It seemed certain that he would be struck but the timber was thrown in another direction. Help was near, and a trolley was procured to bring him home. He suffered a good deal from shock.



F&DHS DOCUMENT ARCHIVE

Title... *Hayden Mill Log Allocation*

Subject Category.....

Key Words.....

DOC. *469* Date... *1930*.....



Name  Hayden Bros  
 Address <sup>TOT</sup> Barren Downs District Quincy E.  136  
 Name of Mill  
 Situation of Mill Pl. Barren Downs. Loading Station Barren Downs.  
 Situation of Cutting Area Barren Downs.  
 Species of Timber Mix ash 30, Mes 25, Mix S. 20, Swamp Gum 20, B. wood 5.  
 Royalty

OUTPUT 1928-29

SAWMILLER'S RECORD.

Month.	Scantlings, &c.	Rate.	Shorts.	Rate.	Smalls.	Rate.	TOTAL
July	67 876	1/4					
Aug	70 836	"			589	9	68. 465
Sep	56 773	"			1270	"	72. 106
Oct	90 742	"			8057	"	64. 830
Nov	68 555	"			5838	"	96. 580
Dec.	50 501	"			9054	"	77. 609
Jan	62 161	"			-	"	50. 501
Feb.	60 494	"			5831	"	67. 992
Mar.	82 911	"			12 862	"	73. 356
April	67 232	"			3060	"	85. 971
May	74 006	"			675	"	67. 907
June	89 769	"			-	"	74 007
					765	"	90. 634
<u>1929-30</u>							
July	76 652	1/4					
Aug.	79 077	"			10538	9	889 858
Sept	73 715	"			720	"	
Oct.	83 612	"			4178	"	
Nov.	70 766	"			8675	"	
Dec.	62 827	"			3683	"	
Jan	64 944	"			3678	"	
Feb.	57 627	"					
Mar.	40 526	"			5376		
Apr.	28 335	"					
May	54 776	"			4358		
June	37 786	"			5360		
	735,093				46,784		781. 877
	735,093				46,784		781,877

694 B



*Hayden Bros.*

Month.	Seasoning Quality Log Measurement.	Rate.	Scantling Quality.	Rate.	Smalls.	Rate.	TOTAL
Feb.	100,910	1/4					
Mar.	157,827	1/2					
Apr.	539,819	1/2					
May	259,556	1/2					
							123,036
							19,171-18
							163,480
							107,801
							58,679
							163,480
							TOTAL

SAWMILLER'S RECORD.

Name **W. T. KINCAID,**  
 Address **13 QUEEN STREET, COLAC.**  
 Name of Mill  
 Situation of Mill  
 Situation of Cutting Area Approval  
 Species of Timber Parish  
 Royalty **1/6d. per 100 ft. super.**

OUTPUT. 1944-45.

Month.	Seasoning Quality Log Measurement.	Rate
Feb.	16,321	1/6
Oct.	19,711	1/6
Nov.	27,108	1/6
Jan.	19,316	1/6
Feb.	146,153	1/6
Mar.	165,103	1/6
Apr.	158,037	1/6
May	19,251	1/6
		56,1682
Sept.	83,115	1/6
Oct.	66,228	1/6
Nov.	81,549	1/6
Dec.	168,284	1/6
Jan.	32,798	1/6
Feb.	61,118	1/6
Mar.	78,036	1/6
Apr.	58,175	1/6
	67,432	1/6
May	202,991	1/6
June	38,922	1/6
	63,328	1/6
		1,002,276



SAWMILLER'S RECORD.

Name **HAYDEN BROS. ~~PTY. LTD.~~**

District **OTWAY EAST.**

192

Address **BARWON DOWNS.**

File No. **40/800.**

Name of Mill

Date of Allotment

Situation of Mill

Loading Station

Situation of Cutting Area **Approved extension milling rights to include Seymour Creek area in Parish of Barwon Downs @ 1/2d. per 100 ft. super. IN THE ROUND, on**

Species of Timber **all logs cut on existing area and 1/6d. per 100 ft. super IN THE**

Royalty **1/2d. per 100 s. ft. IN THE ROUND.** **ROUND on all logs cut on extension area 10/10/44. 44/793.**

OUTPUT. 1944-45.

Month.	Seasoning Quality Log Measurement.	Rate	Scantling Quality.	Rate.	Small.	Rate.	TOTAL
Oct.	61,231.	1/2					<p><i>Graded up to 1000-000 S.F. N.P.V. from S.F. in headwaters of Seymour Creek, Parish of Warrigania @ 3/4 per 100 S.F. In the Round 1/27/45 - 4/7/44</i></p>
Nov.	112,830	1/2					
Dec.	102,038	1/2					
Jan.	80,502	1/2					
Feb.	83,002	1/2					
Mar.	156,773	1/2					
Apr.	152,269	1/2					
May	118,500	1/2					
June	136,762	1/2					
	<b>1,006,691</b>						
<u>1945-46</u>							
July	14,636	1/2					
Feb.	20,566	1/2					
Mar.	112,251	1/2					
Apr.	105,406	1/2					
May	126,580	1/2					
June	35,592	1/2					
	<b>425,021</b>						<b>425,021</b>
<u>1946-47</u>							
Nov.	12,592	1/2					
Dec.	2,185	1/2					
	<b>14,777</b>						<b>14,777</b>

R/469



F&DHS DOCUMENT ARCHIVE

Title: SKELETON FOUND NEAR  
HAYDEN'S MILL

Source: ARGUS .....

DOC. 0.190 .....



## SKELETON FOUND.

### Supposedly That of Millhand.

COLAC, Monday. — A dog was recently seen carrying a human skull near Hayden Brothers' Mill at Barwon Downs. A search was made and the remainder of the body was found on Sunday. A search party from Forrest, organised by Constable J. H. Sullivan, of Forrest, was investigating some rough country close to the mill, when a man named F. Grant came upon what appeared to be human bones. Although only about 100 yards from a hut formerly occupied by J. Milton, a millhand, who disappeared about a year ago, the undergrowth at this point is extremely thick, and the employees of the mill never go into it, as it is almost impenetrable. Practically only a skeleton was found, but clothes, a pipe, and various other objects near the remains lead to the conclusion that they are those of Milton.

Although it is stated that Milton was not in the best of health at the time of his disappearance, it seems remarkable that he could have died so close to the mill without anything being heard of him. The remains are being taken to Forrest, where an inquest will be held.



F&DHS DOCUMENT ARCHIVE  
Title..DOG..FINDS..HUMAN SKULL

Source..ARGUS.....  
DOC..0191.....



## DOG FINDS HUMAN SKULL.

### Milhand's Disappearance Recalled.

COLAC, Monday. — The discovery of a human skull in the vicinity of Barwon Downs has revived interest in the disappearance of a man named J. Milton about a year ago. He was employed at Messrs. Hayden Bros. sawmills, and, as his failure to return to the mill was regarded as peculiar, a search was made, but without result. On Friday last a dog was seen carrying the skull of a man. Constable Sullivan, of Forrest, was communicated with, and he has arranged for search parties to look for the remains, which, it is thought, are those of Milton.



F&DHS DOCUMENT ARCHIVE DOC.....Date.....

Title.....

0529

Subject Category.....

Key Words.....

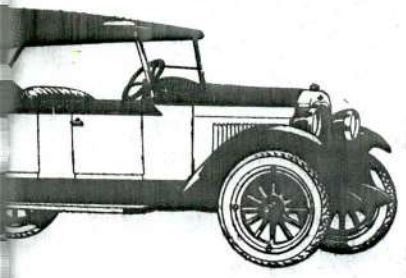
0529



3/1/02

HOVEY).  
 RATION TEST—  
 Mr. J. DONDEY).  
 YING MILE—  
 driven by Mr. F. HOVEY).

District :  
**Postal Garage.**



**CHEVROLET.**

new Chevrolet for beauty, performance,

example. Its lines are big car lines—  
 are big car appointments—high-grade,

ness.

ect balance mean luxurious travel. Its  
 anywhere.

equipment.

**DEMONSTRATE.**

**LET IN CHEVROLET HISTORY.**

**BROS.,**

SERVICE

LIEBIG ST., WARRNAMBOOL.

man in the street is unable to regard  
 was arousing tremendous interest in  
 New Zealand and although he was  
 the official representative, he was  
 hopeful that Ron Nicholson, now lo-  
 cated in Sydney, and K. McKenzie  
 would link up with him to make a  
 team for the teams championship for  
 which the Sporting Globe is giving  
 £60.

To accomplish an extensive flight  
 through Central Australia, or to  
 complete the circuit of the continent  
 necessitates considerable prelimi-  
 nary organisation. Supplies of fuel  
 and oil must be available where the  
 aviator will land, or the motorist  
 pass, and to place supplies for motor  
 and aerial transport in the outland-  
 ish corners of the Continent is in it-  
 self a feat. The means and methods  
 of accomplishing this are known to  
 very few. All the round Australia  
 motor trips, all the aeroplane flights  
 and the only seaplane flight around  
 Australia, were performed on the  
 products of the Vacuum Oil Company  
 Pty. Ltd.

So frequent have been the requests  
 for the products of this company by  
 overlanders that an unbroken chain  
 of hundreds of depots and agencies  
 has been established all round the  
 coast line of 10,000 miles, and also  
 crisscrossing Australia in such a way  
 as to make it possible for any motor-  
 ist to cross the continent by half a  
 dozen routes north and south or east  
 and west.

When a motorist desires to break  
 a record, or an aviator wishes per-  
 haps to make a survey or sudden  
 dash across the continent, as when  
 Colonel Brimsmead flew from Mel-  
 bourne to Darwin to meet Sir Alan  
 Cobham on his arrival from England,  
 the organisation of the Company at  
 his request immediately swings into  
 action.

The itinerary of the trip is closely  
 scrutinised and depots and agents  
 throughout the route are notified by  
 wire to have in readiness the quanti-  
 ties of Plume motor spirit and Gar-  
 goyle mobiloil, that it has been esti-  
 mated will be required for replenish-  
 ment at each point.

To place supplies in position usual-  
 ly necessitates the employment of al-  
 most every conceivable type of trans-  
 port. To reach such points on the  
 remote north-west of Western Aus-  
 tralia, as Broome and Derby, supplies go  
 by ship from Perth, and if a ship be  
 not available, the company does not  
 hesitate to avail itself of the services  
 of the West Australian airways to get  
 the supplies there on time, and thus  
 keep faith with those to whom it has  
 pledged its service.

In the interior of Australia camel  
 teams with their Afghan drivers are  
 frequently used, while at other places  
 motor trucks and carriers' waggons  
 are called on to assist, and even  
 flinkers are sometimes pressed into  
 service to rush supplies to a spot,  
 where possibly a forced landing has  
 been made.

At stopping places the representa-  
 tives of the company meet those on  
 tour, and extend courteous service  
 and assistance, thus reducing not  
 merely the hazards of the trip but  
 removing many of its discomforts.

Largely through this organisation,  
 the services of the Vacuum Oil Com-  
 pany and its products, Plume motor  
 spirit and Gargoyle mobiloil have be-  
 come known throughout the length  
 and breadth of Australia for their  
 reliability and unvarying high qual-  
 ity.

**DUNLOP GRAND PRIX.**

**FINALISING ARRANGEMENTS.**

Gradually matters in connection  
 with the Dunlop Grand Prix 1925

**FIRE AT FORREST.**

**Henry's No. 1 Mill Guttled.**

The well-known firm of timber  
 merchants, Messrs. W. R. Henry and  
 Son, of Forrest and Geelong, suffered  
 extensive losses as the result of a  
 fire which totally destroyed their No.  
 1 Otway plant, six miles from For-  
 rest, early on Wednesday morning.

The fire was first noticed about 1  
 a.m., and although determined efforts  
 were made with heavy rain helping  
 the fire-fighters, nothing was saved of  
 the main milling plant. The building  
 and equipment, including many feet of  
 belting and valuable circular saws,  
 was burnt to the ground. Fortunately  
 there was little timber in the mill  
 at the time, and that on the skid-  
 ways nearby, of which there was a  
 large amount, was practically un-  
 touched by the flames.

The firm is unable as yet to make  
 an actual estimate of the financial  
 losses, but it is evident that they are  
 extensive. The building and plant  
 were not covered by insurance.

It is thought that a spark from  
 smouldering rubbish nearby was  
 blown underneath the breaking-down  
 saws at the side of the building, and  
 from there the flames, fanned by the  
 gale which was blowing, evidently  
 spread swiftly. Minor buildings near-  
 by were scorched, but not damaged.

The destruction of the plant is  
 particularly inopportune, since opera-  
 tions will to a certain extent be  
 cramped for some time to come.  
 Work has been in full swing for some  
 time, numerous orders being on hand  
 for fulfilment. Forty or fifty men  
 have been thrown out of employment,  
 but there are prospects of further  
 work for them, since the firm's auxil-  
 iary mill, two or three miles away from  
 the gutted one, will now be made the  
 centre of operations pending the re-  
 building of the main plant. The  
 existence of this auxiliary plant has  
 saved the felling gangs from unem-  
 ployment, although their output will  
 now have to be slightly curtailed.

At the time of the fire Mr. W. R.  
 Henry was staying at Forrest.

**DREEITE.**

**TOC H SOCIETY.**

At a meeting held last week at  
 Dreeite South, it was decided to form  
 a junior branch of the Toc H, to be  
 known as "The Rover (Oversea and  
 Aussie) Toc H Club," the object be-  
 ing to gather together, socially, the  
 migrant and Australian lads, that  
 they may learn to know each other  
 and to swap experiences that may  
 prove of mutual advantage. Special  
 invitations reading:—"You are invit-  
 ed to the Rover Club at Abernethy's  
 Hall, Dreeite South, on Saturday  
 next, at 8 p.m.; please to remember  
 the 5th of November, Guy Fawkes  
 day, no basses; bring your own grub  
 and mug, the coffee is here. Junior  
 Job Master, A. Brown, padre."

Thirty of these invitations have al-  
 ready been sent out to district mi-  
 grants, but there may be others who  
 would like to enrol. If so they should  
 communicate with the above.

**DEST**  
 engi  
 Oil-Pur

**5 PASS.**  
**TOURING**  
**£3**

*At Comp*  
*all S.*

*Easy*  
*Arr*

W. C. Jev  
 Victori  
 Murray Stree

**BAT**

To MOI  
 we preser  
 Bette

We ha

We ha

We ha

We ha

And have  
 BAT

But see us

BATTERI-

**HENDE**

Phone 185

**COLA**



F&DHS DOCUMENT ARCHIVE  
Title.....

Source.....  
DOC 0198.....



# Birregurra Historical Centre



Between 1921 and 1922 a local Education Department magazine, "Forest, Lake and Plain", was published, printed in Colac. It covered the Colac Inspectorial District — Colac, Camperdown, Lismore, Cressy, Birregurra, Beech Forest, Beeac, Apollo Bay, Lavers Hill,

Corindhap, Forrest, Deans Marsh, Bambra, Boonah, etc. It was open to teachers, pupils and others interested in local education to contribute articles, stories, sketches, poems and was published at least twice a year. (Advertisements from local businesses helped to defray the cost of publication).

We are including more excerpts from these first two issues and copies of the advertisements that often appeared in the publications.

## BUSH LIFE

Once I lived where the Murray flows,  
Not many years ago,  
But now I live at Boonah,  
Where sometimes we have snow.

As I wander off to school,  
I always look to see,  
The many different kinds of birds,  
That hop from tree to tree.

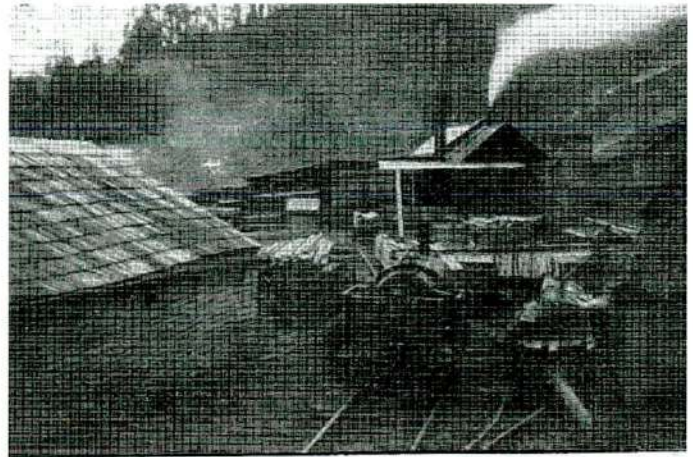
And in the shady gullies deep,  
Where moss and tree-ferns grow,  
The birds are singing merrily;  
That's where I love to go.

*Jewel Rose*

**Boonah School**

## MY FATHER'S MILL

My father has a woodmill;  
He cuts up wood all day;  
He carts it to the station,  
Then sends it far away.



**Henry's Mill, Forrest.**

My brother drives the engine;  
He likes that work the best.  
When finished in the evening,  
They both came home to rest.  
And when the cheques come freely,  
Oh! Doesn't Father smile!  
He thinks he'll make a fortune  
In quite a little while.

*Gladys Garland*

**Pennyroyal School**

## MY DOG

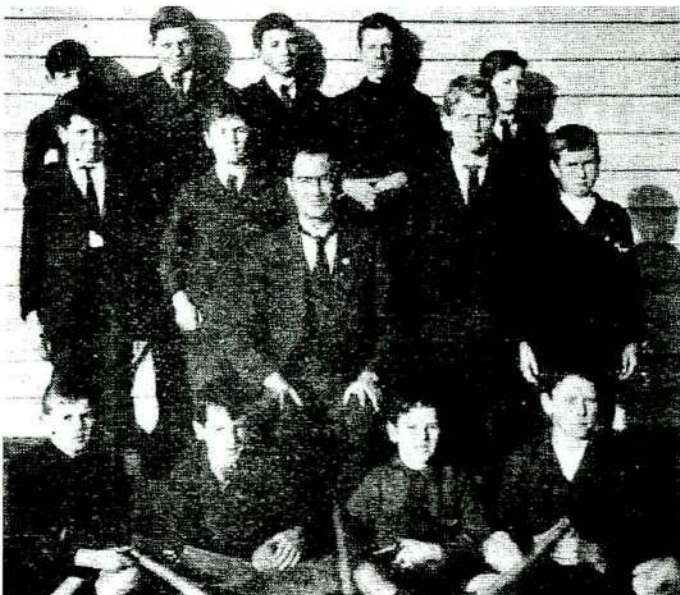
I have a little dog, called "Pat".  
His fur is black and curly.  
When not allowed to follow me  
He looks so cross and surly.

The first thing when the morning comes,  
I hear my doggie make  
The softest little whining noise  
To show it's time to wake.

*Gladys Garland*

**Pennyroyal School**

*Below: Barwon Downs Cricket team.*



*The next meeting of the Birregurra Historical Centre at 45 Main Street will be on 1st March. All welcome*

Phone No 4      Box 3  
THE BIRREGURRA STORE.

**H. E. NICHOLLS**  
Cash Grocer and General Merchant.

Agent for Cuming Smith Manures.

GROCERIES,  
BOOTS,  
HARDWARE,  
CKOCKERY,  
STATIONERY,  
AND SCHOOL REQUISITES  
—At Keenest Prices.—

Fancy Goods.	K L U G ' S	Cycle Accessories.
Drapery	B O O T S	Clothing
Suits to Measure.		KLUG'S, Birregurra, for Value.



**BIRREGURRA TREE TRIMMERS  
PTY LTD**

PH: 03-5236 2146 MOB: 0409 408 512



Neal & Pat Dunnill  
Main Street, Birregurra 3242

**M & L DRAYTON  
PLUMBING SERVICES**

REG NO 24356 C/A No C025494

Domestic and Rural Plumbing, Roofing  
Sewerage/Septic, LPG/Natural Gas Connections,  
Motorised Drain Cleaning Service  
Phone Mark: 5288 7244 Mobile: 0428 520 142  
LORNE ROAD, WINCHELSEA SOUTH 3241

**WATER SUPPLY SPECIALISTS  
COLAC P/L**

74 Dennis Street, Colac

Free on-farm, no obligation quotations for Agriculture or  
Domestic Water Reticulation Systems  
See Bruce Roberts or Peter Devine  
Phone: (03) 5231 1861

Distributors for Davey, Onga, Grundfos, Mono  
Pumps, Hardie Irrigation Systems, Poly & PVC Pipe &  
Fittings.

**BOWEN MOTORS  
Len & Jeanette Bowen**

VACC

'A' GRADE ENGINEERS  
AUTOMATIC TRANSMISSION SPECIALISTS  
8 Main Street, Birregurra. 3242  
Phone: (03) 5236 2138

**HAVE YOUR LIGHTS GONE OUT?  
NO MATTER WHAT YOUR  
PROBLEM, DODDS ELECTRIX  
CAN SHED SOME LIGHT.**

RURAL, INDUSTRIAL, COMMERCIAL, DOMESTIC  
PHONE 0438 887 360. AFTER HOURS 03 5288 7360  
480 BRICKMAKERS ROAD BAMBRA 3241 VICTORIA  
REC 17520. EMAIL: DODDSY@FASTMAIL.FM

...for a life worth celebrating



**Tuckers**  
Funeral & Bereavement Service

Serving the Community for 130 Years  
Phone: 5221 4788 - www.tuckers.com.au

ABN: 362 400 630 56  
Rec No: 17792  
**HEATH HSE SMITH  
ELECTRICAL**

• Domestic • Commercial • Industrial • Rural  
• Accredited Grid Feed Solar Power Installer

**HEATH SMITH**

mob: 0427 363 331  
email: hmsmith@hotmail.com

**WFI, good people to know for  
rural & business insurance.**

For an obligation-free quote contact your local WFI Area Manager.

Adam Wray - WFI Colac | 526 Princes Highway  
Phone (03) 5231 4516 | Mobile 0412 117 458 | www.wfi.com.au

WFI is a trading name of Wesfarmers General Insurance  
Limited ABN 24 000 036 279 AFSL 241461.



PATRICK JOHN DAVIS  
AUTO ELECTRICIAN



**PAT DAVIS AUTO  
ELECTRICAL**

ALL ELECTRICAL WORK ON  
CARS, TRUCKS, BOATS, BUSES  
& FARM MACHINERY

54 BARRY STREET      0429 427 498  
BIRREGURRA VIC 3242    03 5236 2414



**STS  
ACCOUNTING  
GROUP**

Surfcoast Taxation Services Pty Ltd  
Accounting, Taxation and Business Advisers  
Winchelsea: 22 Willis Street      Torquay: 13 Pearl St  
Po Box 40      Po Box 178  
Winchelsea VIC 3241      Torquay VIC 3228  
winch@surftax.com.au      admin@surftax.com.au  
Tel: 5267 2673      Tel: 5261 2262  
w: www.surftax.com.au

**South Vic  
Fencing**

• Rural Fencing • Plain & Electric • Box & Pine Post • Stock Yards

Call Henry - Mob. 0400 898 317 Ph. 5234 6026



**CHARLES  
STEWART**

**LOCAL LIVESTOCK REPRESENTATIVE:**  
Matt Nelson Mob: 0428 315400 Ah: 03 52336337

**RURAL PROPERTY SALES**

56 Bromfield Street, Colac 0352 315400  
Michael Stewart, Anthony McDonald,  
Peter Groves, Daryl Osborne

**RESIDENTIAL SALES**

158 Murray Street, Colac 0352 315311  
Melissa Henry, Steve Lugg, Sam Monaco

**COLAC RENTAL MANAGEMENT**

144 Murray Street, Colac 0352 315011  
www.charlesstewart.com.au



F&DHS DOCUMENT ARCHIVE

Title *Henry Mill Log Allocation*

Subject Category .....

Key Words .....

DOC *470*

Date *1930* .....



Name  W. P. Henry & Sons  
 Address Dorset

District Gloucester 134

Name of Mill 601 mill (No Noonday mill). Loading Station Dorset

Situation of Mill Pl of Baranunga R.F.

601 mill was burnt in Oct 1927 when cutting operations were transferred to the Noonday Mill in the same Pl & same locality. See 29/474.

Situation of Cutting Area Pl of Baranunga

Species of Timber Mes 50, Pin 5.5.50.

Royalty

OUTPUT 1928-29

Month.	Scantlings, &c.	Rate.	Shorts.	Rate.	Smalls.	Rate.	TOTAL	
July	55 988	1/1			4568	9	60.556	
Aug.	61 419	"			2776	"	64.195	
Sep.	64 940	"			900	"	65.840	
Oct	57 470	"			5915	"	63.385	
Nov	79. 949	"			5854	"	85.803	
Dec	44. 736	"			1438	"	46.174	
Jan	47. 668	"			-	"	46.68	
Feb.	60. 441	"			7643	"	63.084	
Mar.	60. 568	"			6125	"	66.693	
April	35. 059	"			5353	"	40.412	
May	35 150	"			2745	"	85895	
June	-				-		-	
<u>1929-30</u>								
July	-				-		-	
Aug.	-				-		-	
Sept.	-				-		-	
Oct.	-				-		-	
Nov.	-				-		-	
Rejects 48000 6								
TOTAL								694705

SAWMILLER'S RECORD.

RECORDED BY

8/470







Name **OTWAY SAWMILLS PTY. LTD.,**

District **OTWAY EAST.**

188

Address **FORREST.**

File No. **40/440**

Name of Mill

Date of Allotment

Situation of Mill

Loading Station

Situation of Cutting Area

*Logging rights granted over area, alloted from original saw, rates to  
S.P. Parish of 100 per cent per 100 S.F. due the Round - all other rights cancelled  
(See letter and to kind of application by new mill) 2/4/48 - 1/7/51*

Species of Timber

Royalty **1/4d. per 100 ft. super. OVER THE SAW.  
9d., 1/8d., & 1ld. " " "**

OUTPUT. 1944-45.

SAWMILLER'S RECORD.

Month.	Seasoning Quality Log Measurement.	Rate	Ordinary Scanting Quality.	Rate.	Smalls.	Rate.	Smalls.	TOTAL
July	68,281	1/8	2,141	1/4	851	11	3,049	9
Aug.	38,263	1/8	3,493	1/4	352	11	4,663	9
Sept.	32,081	1/8	4,909	1/4	205	11	2,994	9
Oct.	71,532	1/8	5,237	1/4	518	11	3,159	9
Nov.	84,943	1/8	3,527	1/4	507	11	3,075	9
Dec.	65,494	1/8	2,286	1/4	4,429	11	7,234	9
Jan.	55,886	1/8	2,166	1/4	629	11		
Feb.	62,808	1/8	7,913	1/4	699	11	4,768	9
Mar.	78,667	1/8	1,089	1/4	5,677	11	3,843	9
Apr.	68,485	1/8	768	1/4	789	11	3,010	9
May	80,048	1/8	1,810	1/4	4,651	11	4,136	9
June	61,635	1/8	7,275	1/4	577	11	1,613	9
	774,325		72,706		29,152		41,544	919,727
<u>1945-46</u>								
July	31,727	1/8	12,152	1/4	365	11	1,721	9
Aug.	50,882	1/8			482	11	750	9
Sept.	36,229	1/8	3,423	1/4	4,517	11	3,014	9
Oct.	71,846	1/8	5,053	1/4	799	11	1,863	9
Nov.	57,841	1/8	14,421	1/4	530	11	1,312	9
Dec.	55,287	1/8	7,453	1/4	455	11	19	9
Jan.	26,532	1/8			351	11		
Feb.	78,386	1/8			1,158	11		
Mar.	74,077	1/8	1,119	1/4	956	11	14,433	9
Apr.	50,862	1/8	7,756	1/4	5,336	11	661	9
May	48,804	1/8	25,779	1/4	619	11	6,373	9
June	45,072	1/8	14,780	1/4	343	11	1,350	9
	627,545		91,936		15,911		31,516	766,908

2/470



OUTPUT—continued. *Olway Sawmills Ply. Sta.*

Month.	Seasoning Quality Log Measurement.	Rate	Scantling Quality.	Rate.	Small.	Rate.	TOTAL
<u>19.46-47</u>							
July	46,470	1/8	2,192	1/4	392	1/8	5,269
Aug.	40,152	1/8	5,188	1/4	599	1/8	19,221
Sept.	6,341	1/8	4,926	1/4	45	1/8	4,561
Oct.	24,314	1/8	2,020	1/4	192	1/8	15,007
Nov.	67,068	1/8	1,542	1/4	515	1/8	8,118
Dec.	57,299	1/8	1,812	1/4	115	1/8	4,562
Jan.	10,012	1/8	21,421	1/4	129	1/8	183
Feb.	57,168	1/8	4,561	1/4	349	1/8	1,376
Mar.	40,333	1/8	16,577	1/4	312	1/8	4,782
Apr.	42,868	1/8	3,081	1/4	393	1/8	1,338
May	48,539	1/8	12,730	1/4	550	1/8	4,882
June	60,492	1/8	682	1/4	118	1/8	2,525
	501,362		96,497		4,301		29,763
							631,923
<u>19.47-48</u>							
July	20,712	1/8	2,133	1/4	243	1/8	832
Aug.	44,893	1/8	2,031	1/4	371	1/8	5,240
Sept.	27,796	1/8	17,490	1/4	263	1/8	1,477
Oct.	22,427	1/8	18,450	1/4	369	1/8	1,688
Nov.	32,868	1/8	9,938	1/4	271	1/8	101
Dec.	26,786	1/8	9,440	1/4	240	1/8	16,533
Jan.	33,377	1/8	7,279	1/4	145	1/8	9,863
Mar.	7,551	1/8	4,657	1/4	816	1/8	833
Apr.	14,481	1/8	1,802	1/4	32	1/8	10,696
	230,891		79,935		2,780		10,696
							5,777
							330,079
							336,079

RECORDED & INDEXED

Name **E. L. BABINGTON,**  
 Address **LORNE.**  
 Name of Mill  
 Situation of Mill  
 Situation of Cutting Area  
 Species of Timber  
 Royalty **1/3d. per 100 s. ft.**

SAWMILLER'S RECORD.

OUTPUT. 1944-45.

Month.	Seasoning Quality Log Measurement.	Rate
July	22,117	1/6
Aug.	44,316	1/6
Sept.	25,993	1/6
Nov.	37,712	1/6
Jan.	20,264	1/6
Feb.	89,657	1/6
Mar.	23,398	1/6
Apr.	23,321	1/6
	296,781	
Nov.	55,341	1/6
Jan.	72,182	1/6
Feb.	76,944	1/6
Mar.	37,012	1/6
Apr.	23,940	1/6
May	82,492	1/6
	347,911	
Sept.	69,358	1/6
Oct.	100,188	1/6
Nov.	80,973	1/6
Dec.	74,821	1/6
Jan.	9,060	1/6
Feb.	8,508	1/6
Mar.	17,801	1/6
	360,712	



F&DHS DOCUMENT ARCHIVE DOC..... Date.....  
Title HENRY SAWMILL Photographs..

Subject Category SAWMILLS

Key Words HENRY SAWMILLS

0330

MARIG COPY SITE





ENTRANCE TO TUNNEL  
HENRY & SONS LUMBER CO. EST. 1888





FALLING  
HENRY & SONS, SAWMILLS  
FOREST





*Steam logging winch.  
Oway forest, about 1908.*